

# Anti-CD300f Antibody

Rabbit polyclonal antibody to CD300f  
Catalog # AP60795

## Product Information

|                   |                        |
|-------------------|------------------------|
| Application       | WB                     |
| Primary Accession | <a href="#">Q8TDQ1</a> |
| Reactivity        | Human, Mouse, Rat      |
| Host              | Rabbit                 |
| Clonality         | Polyclonal             |
| Calculated MW     | 32335                  |

## Additional Information

|                    |  |
|--------------------|--|
| Gene ID            | 146722   |
| Other Names        | CD300F; CLM1; IGSF13; IREM1; NKIR; CMRF35-like molecule 1; CLM-1; CD300 antigen-like family member F; Immune receptor expressed on myeloid cells 1; IREM-1; Immunoglobulin superfamily member 13; IgSF13; NK inhibitory receptor; CD300f |
| Target/Specificity | KLH-conjugated synthetic peptide encompassing a sequence within the center region of human CD300f. The exact sequence is proprietary.  |
| Dilution           | WB~~WB (1/500 - 1/1000)  |
| Format             | Liquid in 0.42% Potassium phosphate, 0.87% Sodium chloride, pH 7.3, 30% glycerol, and 0.09% (W/V) sodium azide.  |
| Storage            | Store at -20 °C.Stable for 12 months from date of receipt  |

## Protein Information

|          |  |
|----------|--|
| Name     | CD300LF  |
| Synonyms | CD300F, CLM1, IGSF13, IREM1, NKIR  |
| Function | Acts as an inhibitory receptor for myeloid cells and mast cells (PubMed: <a href="#">15549731</a> ). Positively regulates the phagocytosis of apoptotic cells (efferocytosis) via phosphatidylserine (PS) recognition; recognizes and binds PS as a ligand which is expressed on the surface of apoptotic cells. Plays an important role in the maintenance of immune homeostasis, by promoting macrophage-mediated efferocytosis and by inhibiting dendritic cell-mediated efferocytosis (By similarity). Negatively regulates Fc epsilon receptor-dependent mast cell activation and allergic responses via binding to ceramide and sphingomyelin which act as ligands (PubMed: <a href="#">24035150</a> ). May act as a coreceptor for interleukin 4 (IL-4). Associates with and regulates IL-4 |

receptor alpha-mediated responses by augmenting IL-4- and IL-13-induced signaling (By similarity). Negatively regulates the Toll-like receptor (TLR) signaling mediated by MYD88 and TRIF through activation of PTPN6/SHP-1 and PTPN11/SHP-2 (PubMed:[22043923](#)). Inhibits osteoclast formation. Induces macrophage cell death upon engagement (By similarity).

**Cellular Location**

Cell membrane; Single-pass type I membrane protein

**Tissue Location**

Highly expressed in spleen, peripheral blood leukocyte and monocyte, and lung. Weakly expressed in thymus, heart, brain, placenta, liver, skeletal muscle, kidney, pancreas, prostate, testis, ovary, small intestine or colon. Expressed selectively in monocytes and monocyte-related cells.

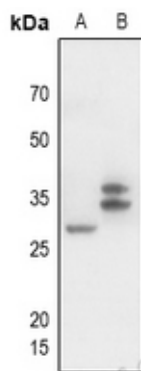
## Background

---

KLH-conjugated synthetic peptide encompassing a sequence within the center region of human CD300f. The exact sequence is proprietary.

## Images

---



Western blot analysis of CD300f expression in mouse liver (A), rat spleen (B) whole cell lysates.

Please note: All products are 'FOR RESEARCH USE ONLY. NOT FOR USE IN DIAGNOSTIC OR THERAPEUTIC PROCEDURES'.