

Anti-CD316 Antibody

Rabbit polyclonal antibody to CD316

Catalog # AP60796

Product Information

Application	WB
Primary Accession	Q969P0
Other Accession	Q8R366
Reactivity	Human, Mouse
Host	Rabbit
Clonality	Polyclonal
Calculated MW	65034

Additional Information

Gene ID	93185
Other Names	CD81P3; EWI2; KCT4; Immunoglobulin superfamily member 8; IgSF8; CD81 partner 3; Glu-Trp-Ile EWI motif-containing protein 2; EWI-2; Keratinocytes-associated transmembrane protein 4; KCT-4; LIR-D1; Prostaglandin regulatory-like protein; PGRL; CD316
Target/Specificity	Recognizes endogenous levels of CD316 protein.
Dilution	WB~~WB (1/500 - 1/1000)
Format	Liquid in 0.42% Potassium phosphate, 0.87% Sodium chloride, pH 7.3, 30% glycerol, and 0.09% (W/V) sodium azide.
Storage	Store at -20 °C.Stable for 12 months from date of receipt

Protein Information

Name	IGSF8
Synonyms	CD81P3, EWI2, KCT4
Function	Member of the immunoglobulin superfamily (IgSF) that links tetraspanin-enriched microdomains to the actin cytoskeleton and plays several important roles in innate and adaptive immunity (PubMed: 11504738 , PubMed: 14662754). Acts as an inducible receptor of HSPA8 on dendritic cells to enhance the CCL21/SLC-dependent migration of activated mature dendritic cells while attenuating their antigen- specific stimulatory capacities (PubMed: 17785435). In complex with alpha-actinins ACTN1 and ACTN4, regulates actin dynamics in the immune synapse and subsequent T-cell activation (PubMed: 22689882). Inhibits the entry of several viruses such as hepatitis C Virus (HCV) or HIV-1. Mechanistically, promotes a change in CD81

organization at the plasma membrane by significantly restricting its diffusion which in turn influences CD81 interaction with Claudin-1/CLDN1, preventing CLDN1 from acting as a co-receptor required for HCV entry (PubMed:[23351194](#)). Accumulates at the presynaptic terminal, the producer cell side of the virological synapse, to prevent HIV-1 Env-mediated cell-cell fusion (PubMed:[31757023](#)). Highly expressed on malignant cells with antigen presentation defects, interacts with NK receptor KIR3DL2 to suppress NK-cell cytotoxicity (PubMed:[38657602](#)). May participate in the regulation of neurite outgrowth and maintenance of the neural network in the adult brain.

Cellular Location

Cell membrane; Single-pass membrane protein. Note=Colocalizes with CD81 at the immune synapse.

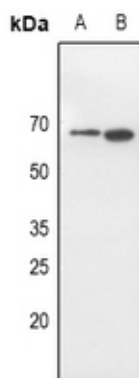
Tissue Location

Expressed in brain, kidney, testis, liver and placenta with moderate expression in all other tissues. Detected on a majority of B-cells, T-cells, and natural killer cells (PubMed:12708969). Expressed on dendritic cells (PubMed:17785435)

Background

KLH-conjugated synthetic peptide encompassing a sequence within the center region of human CD316. The exact sequence is proprietary.

Images



Western blot analysis of CD316 expression in HEK293T (A), HeLa (B) whole cell lysates.

Please note: All products are 'FOR RESEARCH USE ONLY. NOT FOR USE IN DIAGNOSTIC OR THERAPEUTIC PROCEDURES'.