

Anti-GPR137C Antibody

Rabbit polyclonal antibody to GPR137C
Catalog # AP60801

Product Information

Application	WB
Primary Accession	Q8N3F9
Reactivity	Human, Mouse
Host	Rabbit
Clonality	Polyclonal
Calculated MW	47075

Additional Information

Gene ID	283554
Other Names	TM7SF1L2; Integral membrane protein GPR137C; Transmembrane 7 superfamily member 1-like 2 protein
Target/Specificity	Recognizes endogenous levels of GPR137C protein.
Dilution	WB~~WB (1/500 - 1/1000)
Format	Liquid in 0.42% Potassium phosphate, 0.87% Sodium chloride, pH 7.3, 30% glycerol, and 0.09% (W/V) sodium azide.
Storage	Store at -20 °C.Stable for 12 months from date of receipt

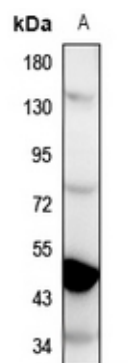
Protein Information

Name	GPR137C
Synonyms	TM7SF1L2
Function	Lysosomal integral membrane protein that may regulate MTORC1 complex translocation to lysosomes.
Cellular Location	Lysosome membrane; Multi-pass membrane protein

Background

KLH-conjugated synthetic peptide encompassing a sequence within the center region of human GPR137C. The exact sequence is proprietary.

Images



Western blot analysis of GPR137C expression in mouse kidney (A) whole cell lysates.

Please note: All products are 'FOR RESEARCH USE ONLY. NOT FOR USE IN DIAGNOSTIC OR THERAPEUTIC PROCEDURES'.