

Anti-GPR180 Antibody

Rabbit polyclonal antibody to GPR180

Catalog # AP60802

Product Information

Application	WB
Primary Accession	Q86V85
Other Accession	Q8BPS4
Reactivity	Human, Mouse, Rat
Host	Rabbit
Clonality	Polyclonal
Calculated MW	49395

Additional Information

Gene ID	160897
Other Names	ITR; Integral membrane protein GPR180; Intimal thickness-related receptor
Target/Specificity	KLH-conjugated synthetic peptide encompassing a sequence within the center region of human GPR180. The exact sequence is proprietary.
Dilution	WB~~WB (1/500 - 1/1000)
Format	Liquid in 0.42% Potassium phosphate, 0.87% Sodium chloride, pH 7.3, 30% glycerol, and 0.09% (W/V) sodium azide.
Storage	Store at -20 °C.Stable for 12 months from date of receipt

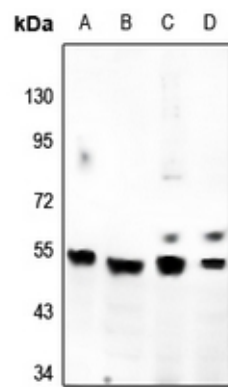
Protein Information

Name	GPR180
Synonyms	ITR
Cellular Location	Membrane; Multi-pass membrane protein

Background

KLH-conjugated synthetic peptide encompassing a sequence within the center region of human GPR180. The exact sequence is proprietary.

Images



Western blot analysis of GPR180 expression in BV2 (A), PC12 (B), A549 (C), HepG2 (D) whole cell lysates.

Please note: All products are 'FOR RESEARCH USE ONLY. NOT FOR USE IN DIAGNOSTIC OR THERAPEUTIC PROCEDURES'.