

Anti-Glutathione Peroxidase Antibody

Rabbit polyclonal antibody to Glutathione Peroxidase

Catalog # AP60810

Product Information

Application	WB
Primary Accession	P07203
Other Accession	P11352
Reactivity	Human, Mouse, Rat, Bovine
Host	Rabbit
Clonality	Polyclonal
Calculated MW	22088

Additional Information

Gene ID	2876
Other Names	Glutathione peroxidase 1; GPx-1; GSHPx-1; Cellular glutathione peroxidase
Target/Specificity	KLH-conjugated synthetic peptide encompassing a sequence within the center region of human Glutathione Peroxidase. The exact sequence is proprietary.
Dilution	WB~~WB (1/500 - 1/2000)
Format	Liquid in 0.42% Potassium phosphate, 0.87% Sodium chloride, pH 7.3, 30% glycerol, and 0.09% (W/V) sodium azide.
Storage	Store at -20 °C.Stable for 12 months from date of receipt

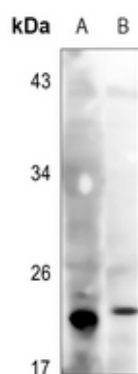
Protein Information

Name	GPX1 (HGNC:4553)
Function	Catalyzes the reduction of hydroperoxides in a glutathione- dependent manner thus regulating cellular redox homeostasis (PubMed: 11115402 , PubMed: 36608588). Can reduce small soluble hydroperoxides such as H2O2, cumene hydroperoxide and tert-butyl hydroperoxide, as well as several fatty acid-derived hydroperoxides (PubMed: 11115402 , PubMed: 36608588). In platelets catalyzes the reduction of 12-hydroperoxyeicosatetraenoic acid, the primary product of the arachidonate 12-lipoxygenase pathway (PubMed: 11115402).
Cellular Location	Cytoplasm {ECO:0000250 UniProtKB:P11352}. Mitochondrion {ECO:0000250 UniProtKB:P11352}
Tissue Location	Expressed in platelets (at protein level).

Background

KLH-conjugated synthetic peptide encompassing a sequence within the center region of human Glutathione Peroxidase. The exact sequence is proprietary.

Images



Western blot analysis of Glutathione Peroxidase expression in mouse liver (A), rat liver (B) whole cell lysates.

Please note: All products are 'FOR RESEARCH USE ONLY. NOT FOR USE IN DIAGNOSTIC OR THERAPEUTIC PROCEDURES'.