

# Anti-STEAP2 Antibody

Rabbit polyclonal antibody to STEAP2

Catalog # AP60819

## Product Information

Application	WB, IF/IC, IHC
Primary Accession	<a href="#">Q8NFT2</a>
Other Accession	<a href="#">Q8BWB6</a>
Reactivity	Human, Mouse, Rat, Bovine
Host	Rabbit
Clonality	Polyclonal
Calculated MW	56056

## Additional Information

Gene ID	261729
Other Names	PCANAP1; STAMP1; Metalloreductase STEAP2; Prostate cancer-associated protein 1; Protein up-regulated in metastatic prostate cancer; PUMPCn; Six-transmembrane epithelial antigen of prostate 2; SixTransMembrane protein of prostate 1
Target/Specificity	Recognizes endogenous levels of STEAP2 protein.
Dilution	WB~~WB (1/500 - 1/2000), IHC (1/50 - 1/200), IF/IC (1/50 - 1/100) IF/IC~~N/A IHC~~WB (1/500 - 1/2000), IHC (1/50 - 1/200), IF/IC (1/50 - 1/100)
Format	Liquid in 0.42% Potassium phosphate, 0.87% Sodium chloride, pH 7.3, 30% glycerol, and 0.09% (W/V) sodium azide.
Storage	Store at -20 °C.Stable for 12 months from date of receipt

## Protein Information

Name	STEAP2
Synonyms	PCANAP1, STAMP1
Function	Integral membrane protein that functions as a NADPH-dependent ferric-chelate reductase, using NADPH from one side of the membrane to reduce a Fe(3+) chelate that is bound on the other side of the membrane (By similarity). Mediates sequential transmembrane electron transfer from NADPH to FAD and onto heme, and finally to the Fe(3+) chelate (By similarity). Can also reduce Cu(2+) to Cu(1+) (By similarity).
Cellular Location	Endosome membrane {ECO:0000250 UniProtKB:Q8BWB6}; Multi-pass membrane protein. Cell membrane; Multi-pass membrane protein

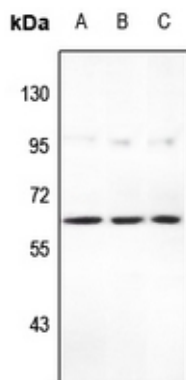
## Tissue Location

Expressed at high levels in prostate and at significantly lower levels in heart, brain, kidney, pancreas, and ovary.

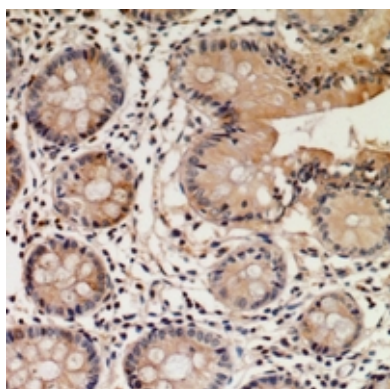
## Background

KLH-conjugated synthetic peptide encompassing a sequence within the C-term region of human STEAP2. The exact sequence is proprietary.

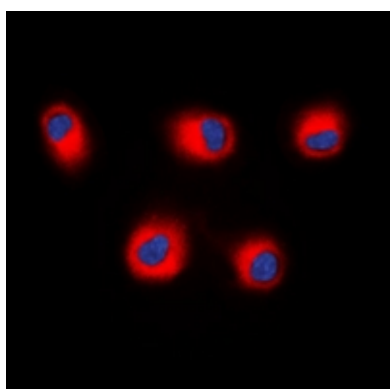
## Images



Western blot analysis of STEAP2 expression in PC3 (A), HEK293T (B), A549 (C) whole cell lysates.



Immunohistochemical analysis of STEAP2 staining in human colon cancer formalin fixed paraffin embedded tissue section. The section was pre-treated using heat mediated antigen retrieval with sodium citrate buffer (pH 6.0). The section was then incubated with the antibody at room temperature and detected using an HRP conjugated compact polymer system. DAB was used as the chromogen. The section was then counterstained with haematoxylin and mounted with DPX.



Immunofluorescent analysis of STEAP2 staining in HEK293T cells. Formalin-fixed cells were permeabilized with 0.1% Triton X-100 in TBS for 5-10 minutes and blocked with 3% BSA-PBS for 30 minutes at room temperature. Cells were probed with the primary antibody in 3% BSA-PBS and incubated overnight at 4 °C in a humidified chamber. Cells were washed with PBST and incubated with a DyLight 594-conjugated secondary antibody (red) in PBS at room temperature in the dark. DAPI was used to stain the cell nuclei (blue).

Please note: All products are 'FOR RESEARCH USE ONLY. NOT FOR USE IN DIAGNOSTIC OR THERAPEUTIC PROCEDURES'.