

Anti-VGLL2 Antibody

Rabbit polyclonal antibody to VGLL2

Catalog # AP60823

Product Information

Application	WB
Primary Accession	Q8N8G2
Other Accession	Q8BGW8
Reactivity	Human, Mouse, Rat
Host	Rabbit
Clonality	Polyclonal
Calculated MW	33426

Additional Information

Gene ID	245806
Other Names	VITO1; Transcription cofactor vestigial-like protein 2; Vgl-2; Protein VITO1
Target/Specificity	KLH-conjugated synthetic peptide encompassing a sequence within the center region of human VGLL2. The exact sequence is proprietary.
Dilution	WB~~WB (1/500 - 1/2000)
Format	Liquid in 0.42% Potassium phosphate, 0.87% Sodium chloride, pH 7.3, 30% glycerol, and 0.09% (W/V) sodium azide.
Storage	Store at -20 °C.Stable for 12 months from date of receipt

Protein Information

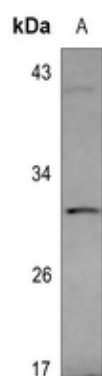
Name	VGLL2
Synonyms	VITO1
Function	May act as a specific coactivator for the mammalian TEFs. May play a role in the development of skeletal muscles.
Cellular Location	Nucleus.
Tissue Location	Skeletal muscle..

Background

KLH-conjugated synthetic peptide encompassing a sequence within the center region of human VGLL2. The

exact sequence is proprietary.

Images



Western blot analysis of VGLL2 expression in A549 (A) whole cell lysates.

Please note: All products are 'FOR RESEARCH USE ONLY. NOT FOR USE IN DIAGNOSTIC OR THERAPEUTIC PROCEDURES'.