

Anti-SFT2D3 Antibody

Rabbit polyclonal antibody to SFT2D3

Catalog # AP60824

Product Information

Application	WB, IHC
Primary Accession	Q587I9
Other Accession	Q9CSV6
Reactivity	Human, Mouse, Rat
Host	Rabbit
Clonality	Polyclonal
Calculated MW	21790

Additional Information

Gene ID	84826
Other Names	Vesicle transport protein SFT2C; SFT2 domain-containing protein 3
Target/Specificity	Recognizes endogenous levels of SFT2D3 protein.
Dilution	WB~~WB (1/500 - 1/2000), IHC (1/50 - 1/200) IHC~~WB (1/500 - 1/2000), IHC (1/50 - 1/200)
Format	Liquid in 0.42% Potassium phosphate, 0.87% Sodium chloride, pH 7.3, 30% glycerol, and 0.09% (W/V) sodium azide.
Storage	Store at -20 °C.Stable for 12 months from date of receipt

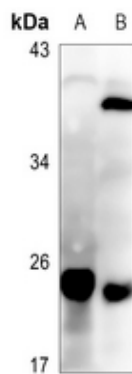
Protein Information

Name	SFT2D3 (HGNC:28767)
Function	May be involved in fusion of retrograde transport vesicles derived from an endocytic compartment with the Golgi complex.
Cellular Location	Membrane; Multi-pass membrane protein

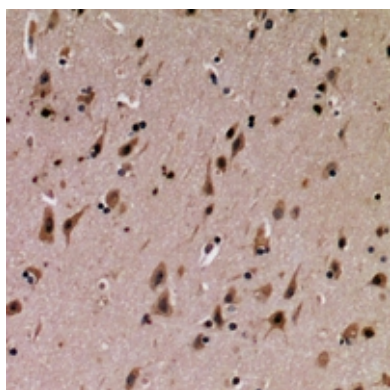
Background

KLH-conjugated synthetic peptide encompassing a sequence within the center region of human SFT2D3. The exact sequence is proprietary.

Images



Western blot analysis of SFT2D3 expression in rat liver (A), rat kidney (B) whole cell lysates.



Immunohistochemical analysis of SFT2D3 staining in human brain formalin fixed paraffin embedded tissue section. The section was pre-treated using heat mediated antigen retrieval with sodium citrate buffer (pH 6.0). The section was then incubated with the antibody at room temperature and detected using an HRP conjugated compact polymer system. DAB was used as the chromogen. The section was then counterstained with haematoxylin and mounted with DPX.

Please note: All products are 'FOR RESEARCH USE ONLY. NOT FOR USE IN DIAGNOSTIC OR THERAPEUTIC PROCEDURES'.