

# Anti-KLF13 (AcK166) Antibody

Rabbit polyclonal antibody to KLF13 (AcK166)  
Catalog # AP60832

## Product Information

---

<b>Application</b>	WB
<b>Primary Accession</b>	<a href="#">Q9Y2Y9</a>
<b>Other Accession</b>	<a href="#">Q9JJZ6</a>
<b>Reactivity</b>	Human, Mouse, Rat
<b>Host</b>	Rabbit
<b>Clonality</b>	Polyclonal
<b>Calculated MW</b>	31180

## Additional Information

---

<b>Gene ID</b>	51621
<b>Other Names</b>	BTEB3; NSLP1; Krueppel-like factor 13; Basic transcription element-binding protein 3; BTE-binding protein 3; Novel Sp1-like zinc finger transcription factor 1; RANTES factor of late activated T-lymphocytes 1; RFLAT-1; Transcription factor BTEB3; Transcription factor NSLP1
<b>Target/Specificity</b>	KLH-conjugated synthetic peptide encompassing a sequence within the center region of human KLF13. The exact sequence is proprietary.
<b>Dilution</b>	WB~WB (1/500 - 1/2000)
<b>Format</b>	Liquid in 0.42% Potassium phosphate, 0.87% Sodium chloride, pH 7.3, 30% glycerol, and 0.09% (W/V) sodium azide.
<b>Storage</b>	Store at -20 °C. Stable for 12 months from date of receipt

## Protein Information

---

<b>Name</b>	KLF13 ( <a href="#">HGNC:13672</a> )
<b>Synonyms</b>	BTEB3, NSLP1
<b>Function</b>	Transcription factor that activates expression from GC-rich minimal promoter regions, including genes in the cells of the erythroid lineage (By similarity). Represses transcription by binding to the BTE site, a GC-rich DNA element, in competition with the activator SP1. It also represses transcription by interacting with the corepressor Sin3A and HDAC1 (PubMed: <a href="#">11477107</a> ). Activates RANTES and CCL5 expression in T- cells (PubMed: <a href="#">17513757</a> ).
<b>Cellular Location</b>	Nucleus.

**Tissue Location**

Ubiquitous.

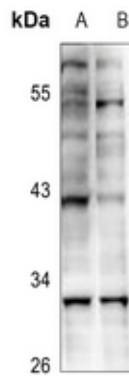
## Background

---

KLH-conjugated synthetic peptide encompassing a sequence within the center region of human KLF13. The exact sequence is proprietary.

## Images

---



Western blot analysis of KLF13 (AcK166) expression in HeLa (A), PC12 (B) whole cell lysates.

Please note: All products are 'FOR RESEARCH USE ONLY. NOT FOR USE IN DIAGNOSTIC OR THERAPEUTIC PROCEDURES'.