

Anti-CD240d Antibody

Rabbit polyclonal antibody to CD240d

Catalog # AP60836

Product Information

Application	WB
Primary Accession	Q02161
Other Accession	Q8CF94
Reactivity	Human, Mouse, Rat
Host	Rabbit
Clonality	Polyclonal
Calculated MW	45211

Additional Information

Gene ID	6007
Other Names	Blood group Rh(D) polypeptide; RHXIII; Rh polypeptide 2; RhPII; Rhesus D antigen; CD240D
Target/Specificity	Recognizes endogenous levels of CD240d protein.
Dilution	WB~~WB (1/500 - 1/2000)
Format	Liquid in 0.42% Potassium phosphate, 0.87% Sodium chloride, pH 7.3, 30% glycerol, and 0.09% (W/V) sodium azide.
Storage	Store at -20 °C.Stable for 12 months from date of receipt

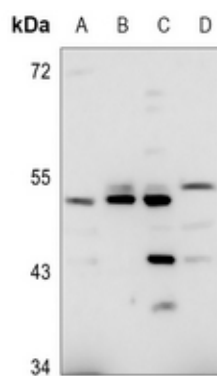
Protein Information

Name	RHD
Function	May be part of an oligomeric complex which is likely to have a transport or channel function in the erythrocyte membrane.
Cellular Location	Cell membrane; Multi-pass membrane protein
Tissue Location	Restricted to tissues or cell lines expressing erythroid characters

Background

KLH-conjugated synthetic peptide encompassing a sequence within the center region of human CD240d. The exact sequence is proprietary.

Images



Western blot analysis of CD240d expression in HEK293T (A), H446 (B), mouse brain (C), mouse heart (D) whole cell lysates.

Please note: All products are 'FOR RESEARCH USE ONLY. NOT FOR USE IN DIAGNOSTIC OR THERAPEUTIC PROCEDURES'.