

Anti-IDH3 gamma Antibody

Rabbit polyclonal antibody to IDH3 gamma

Catalog # AP60838

Product Information

Application	WB
Primary Accession	P51553
Reactivity	Human, Mouse, Rat, Monkey
Host	Rabbit
Clonality	Polyclonal
Calculated MW	42794

Additional Information

Gene ID	3421
Other Names	Isocitrate dehydrogenase [NAD] subunit gamma mitochondrial; Isocitric dehydrogenase subunit gamma; NAD(+)-specific ICDH subunit gamma
Target/Specificity	Recognizes endogenous levels of IDH3 gamma protein.
Dilution	WB~~WB (1/500 - 1/2000)
Format	Liquid in 0.42% Potassium phosphate, 0.87% Sodium chloride, pH 7.3, 30% glycerol, and 0.09% (W/V) sodium azide.
Storage	Store at -20 °C.Stable for 12 months from date of receipt

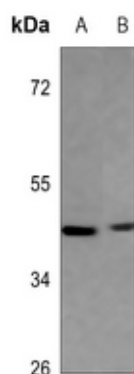
Protein Information

Name	IDH3G
Function	Regulatory subunit which plays a role in the allosteric regulation of the enzyme catalyzing the decarboxylation of isocitrate (ICT) into alpha-ketoglutarate. The heterodimer composed of the alpha (IDH3A) and beta (IDH3B) subunits and the heterodimer composed of the alpha (IDH3A) and gamma (IDH3G) subunits, have considerable basal activity but the full activity of the heterotetramer (containing two subunits of IDH3A, one of IDH3B and one of IDH3G) requires the assembly and cooperative function of both heterodimers.
Cellular Location	Mitochondrion.

Background

KLH-conjugated synthetic peptide encompassing a sequence within the center region of human IDH3 gamma. The exact sequence is proprietary.

Images



Western blot analysis of IDH3 gamma expression in mouse heart (A), rat heart (B) whole cell lysates.

Please note: All products are 'FOR RESEARCH USE ONLY. NOT FOR USE IN DIAGNOSTIC OR THERAPEUTIC PROCEDURES'.