

Anti-CNOT7 Antibody

Rabbit polyclonal antibody to CNOT7

Catalog # AP60843

Product Information

Application	WB, IHC
Primary Accession	Q9UIV1
Other Accession	Q60809
Reactivity	Human, Mouse, Rat, Monkey, Chicken, Bovine
Host	Rabbit
Clonality	Polyclonal
Calculated MW	32745

Additional Information

Gene ID	29883
Other Names	CAF1; CCR4-NOT transcription complex subunit 7; BTG1-binding factor 1; CCR4-associated factor 1; CAF-1; Caf1a
Target/Specificity	KLH-conjugated synthetic peptide encompassing a sequence within the N-term region of human CNOT7. The exact sequence is proprietary.
Dilution	WB~~WB (1/500 - 1/2000), IHC (1/50 - 1/200) IHC~~WB (1/500 - 1/2000), IHC (1/50 - 1/200)
Format	Liquid in 0.42% Potassium phosphate, 0.87% Sodium chloride, pH 7.3, 30% glycerol, and 0.09% (W/V) sodium azide.
Storage	Store at -20 °C.Stable for 12 months from date of receipt

Protein Information

Name	CNOT7
Synonyms	CAF1
Function	Has 3'-5' poly(A) exoribonuclease activity for synthetic poly(A) RNA substrate (PubMed: 19276069 , PubMed: 20634287 , PubMed: 31439799). Its function seems to be partially redundant with that of CNOT8 (PubMed: 19605561). Catalytic component of the CCR4-NOT complex which is one of the major cellular mRNA deadenylases and is linked to various cellular processes including bulk mRNA degradation, miRNA-mediated repression, translational repression during translational initiation and general transcription regulation (PubMed: 19276069 , PubMed: 20634287 , PubMed: 31439799). During miRNA-mediated repression the complex also seems to act as translational repressor during translational initiation (PubMed: 20065043). Additional complex

functions may be a consequence of its influence on mRNA expression (PubMed:[19276069](#), PubMed:[23236473](#)). Associates with members of the BTG family such as TOB1 and BTG2 and is required for their anti- proliferative activity (PubMed:[19276069](#), PubMed:[23236473](#)).

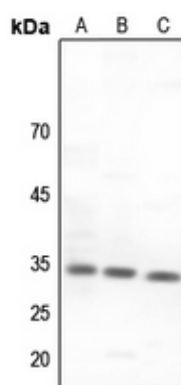
Cellular Location

Nucleus. Cytoplasm, P-body {ECO:0000250|UniProtKB:Q60809}. Cytoplasm, Cytoplasmic ribonucleoprotein granule. Note=NANOS2 promotes its localization to P-body (By similarity). Recruited to cytoplasmic ribonucleoprotein membraneless compartments by CAPRIN1, promoting deadenylation of mRNAs (PubMed:31439799) {ECO:0000250|UniProtKB:Q60809, ECO:0000269|PubMed:31439799}

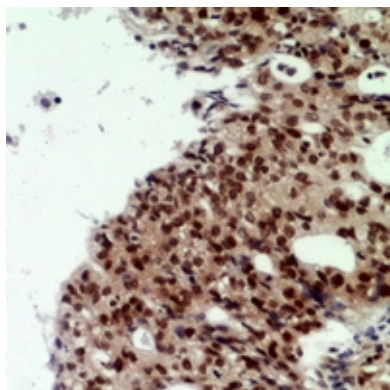
Background

KLH-conjugated synthetic peptide encompassing a sequence within the N-term region of human CNOT7. The exact sequence is proprietary.

Images



Western blot analysis of CNOT7 expression in HEK293T (A), mouse brain (B), rat spleen (C) whole cell lysates.



Immunohistochemical analysis of CNOT7 staining in human ovarian cancer formalin fixed paraffin embedded tissue section. The section was pre-treated using heat mediated antigen retrieval with sodium citrate buffer (pH 6.0). The section was then incubated with the antibody at room temperature and detected using an HRP conjugated compact polymer system. DAB was used as the chromogen. The section was then counterstained with haematoxylin and mounted with DPX.

Please note: All products are 'FOR RESEARCH USE ONLY. NOT FOR USE IN DIAGNOSTIC OR THERAPEUTIC PROCEDURES'.