

# Anti-DCLK2 Antibody

Rabbit polyclonal antibody to DCLK2

Catalog # AP60851

## Product Information

---

Application	WB, IF/IC
Primary Accession	<a href="#">Q8N568</a>
Other Accession	<a href="#">Q6PGN3</a>
Reactivity	Human, Mouse, Rat
Host	Rabbit
Clonality	Polyclonal
Calculated MW	83606

## Additional Information

---

Gene ID	166614
Other Names	DCAMKL2; DCDC3B; DCK2; Serine/threonine-protein kinase DCLK2; CaMK-like CREB regulatory kinase 2; CL2; CLICK-II; CLICK2; Doublecortin domain-containing protein 3B; Doublecortin-like and CAM kinase-like 2; Doublecortin-like kinase 2
Target/Specificity	Recognizes endogenous levels of DCLK2 protein.
Dilution	WB~~WB (1/500 - 1/2000), IF/IC (1/50 - 1/100) IF/IC~~N/A
Format	Liquid in 0.42% Potassium phosphate, 0.87% Sodium chloride, pH 7.3, 30% glycerol, and 0.09% (W/V) sodium azide.
Storage	Store at -20 °C.Stable for 12 months from date of receipt

## Protein Information

---

Name	DCLK2
Synonyms	DCAMKL2, DCDC3B, DCK2
Function	Protein kinase with a significantly reduced C(a2+)/CAM affinity and dependence compared to other members of the CaMK family. May play a role in the down-regulation of CRE-dependent gene activation probably by phosphorylation of the CREB coactivator CRTC2/TORC2 and the resulting retention of TORC2 in the cytoplasm (By similarity).
Cellular Location	Cytoplasm, cytoskeleton. Note=Colocalizes with microtubules.
Tissue Location	Expressed in the brain, heart and eyes.

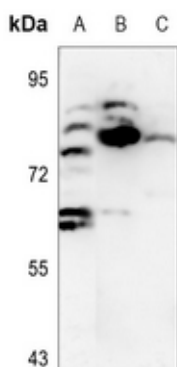
## Background

---

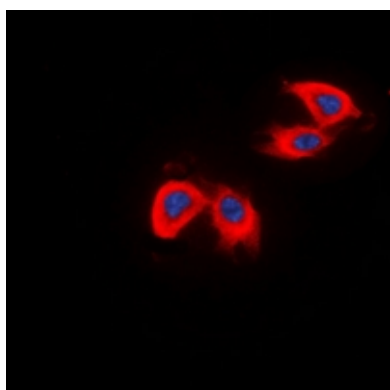
KLH-conjugated synthetic peptide encompassing a sequence within the N-term region of human DCLK2. The exact sequence is proprietary.

## Images

---



Western blot analysis of DCLK2 expression in H1792 (A), mouse testis (B), mouse heart (C) whole cell lysates.



Immunofluorescent analysis of DCLK2 staining in HepG2 cells. Formalin-fixed cells were permeabilized with 0.1% Triton X-100 in TBS for 5-10 minutes and blocked with 3% BSA-PBS for 30 minutes at room temperature. Cells were probed with the primary antibody in 3% BSA-PBS and incubated overnight at 4 °C in a humidified chamber. Cells were washed with PBST and incubated with a DyLight 594-conjugated secondary antibody (red) in PBS at room temperature in the dark. DAPI was used to stain the cell nuclei (blue).

Please note: All products are 'FOR RESEARCH USE ONLY. NOT FOR USE IN DIAGNOSTIC OR THERAPEUTIC PROCEDURES'.