

# Anti-K Cadherin Antibody

Rabbit polyclonal antibody to K Cadherin  
Catalog # AP60853

## Product Information

---

Application	WB, IHC
Primary Accession	<a href="#">P55285</a>
Other Accession	<a href="#">P97326</a>
Reactivity	Human, Mouse, Rat, Chicken, Bovine
Host	Rabbit
Clonality	Polyclonal
Calculated MW	88309

## Additional Information

---

Gene ID	1004
Other Names	Cadherin-6; Kidney cadherin; K-cadherin
Target/Specificity	Recognizes endogenous levels of K Cadherin protein.
Dilution	WB~~WB (1/500 - 1/2000), IHC (1/50 - 1/200) IHC~~WB (1/500 - 1/2000), IHC (1/50 - 1/200)
Format	Liquid in 0.42% Potassium phosphate, 0.87% Sodium chloride, pH 7.3, 30% glycerol, and 0.09% (W/V) sodium azide.
Storage	Store at -20 °C.Stable for 12 months from date of receipt

## Protein Information

---

Name	CDH6
Function	Cadherins are calcium-dependent cell adhesion proteins. They preferentially interact with themselves in a homophilic manner in connecting cells; cadherins may thus contribute to the sorting of heterogeneous cell types.
Cellular Location	Cell membrane; Single-pass type I membrane protein
Tissue Location	Highly expressed in brain, cerebellum, and kidney. Lung, pancreas, and gastric mucosa show a weak expression. Also expressed in certain liver and kidney carcinomas

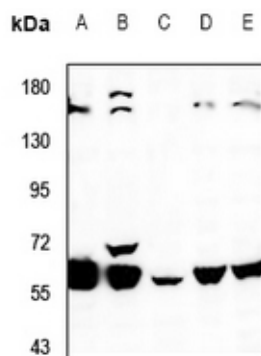
## Background

---

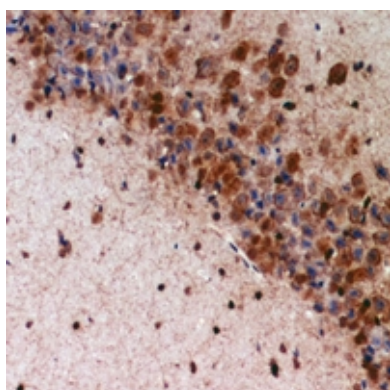
KLH-conjugated synthetic peptide encompassing a sequence within the center region of human K Cadherin. The exact sequence is proprietary.

## Images

---



Western blot analysis of K Cadherin expression in HEK293T (A), C6 (B), MEF (C), HepG2 (D), H1792 (E) whole cell lysates.



Immunohistochemical analysis of K Cadherin staining in mouse brain formalin fixed paraffin embedded tissue section. The section was pre-treated using heat mediated antigen retrieval with sodium citrate buffer (pH 6.0). The section was then incubated with the antibody at room temperature and detected using an HRP conjugated compact polymer system. DAB was used as the chromogen. The section was then counterstained with haematoxylin and mounted with DPX.

Please note: All products are 'FOR RESEARCH USE ONLY. NOT FOR USE IN DIAGNOSTIC OR THERAPEUTIC PROCEDURES'.