

Anti-NOX1 Antibody

Rabbit polyclonal antibody to NOX1

Catalog # AP60859

Product Information

Application	WB, IHC
Primary Accession	Q9Y5S8
Other Accession	Q8CIZ9
Reactivity	Human, Mouse
Host	Rabbit
Clonality	Polyclonal
Calculated MW	64871

Additional Information

Gene ID	27035
Other Names	MOX1; NOH1; NADPH oxidase 1; NOX-1; Mitogenic oxidase 1; MOX-1; NADH/NADPH mitogenic oxidase subunit P65-MOX; NOH-1
Target/Specificity	Recognizes endogenous levels of NOX1 protein.
Dilution	WB~~WB (1/500 - 1/2000), IHC (1/50 - 1/200) IHC~~WB (1/500 - 1/2000), IHC (1/50 - 1/200)
Format	Liquid in 0.42% Potassium phosphate, 0.87% Sodium chloride, pH 7.3, 30% glycerol, and 0.09% (W/V) sodium azide.
Storage	Store at -20 °C.Stable for 12 months from date of receipt

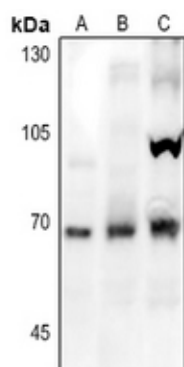
Protein Information

Name	NOX1 (HGNC:7889)
Synonyms	MOX1, NOH1
Function	NADPH oxidase that catalyzes the generation of superoxide from molecular oxygen utilizing NADPH as an electron donor.
Cellular Location	Cell projection, invadopodium membrane; Multi-pass membrane protein. Cell membrane; Multi-pass membrane protein
Tissue Location	[Isoform NOH-1L]: Detected in colon, uterus, prostate, and colon carcinoma, but not in peripheral blood leukocytes

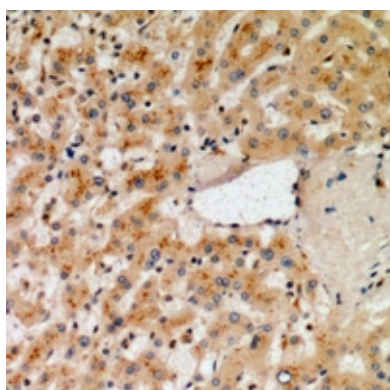
Background

KLH-conjugated synthetic peptide encompassing a sequence within the center region of human NOX1. The exact sequence is proprietary.

Images



Western blot analysis of NOX1 expression in CT26 (A), A2780 (B), MCF7 (C) whole cell lysates.



Immunohistochemical analysis of NOX1 staining in human liver formalin fixed paraffin embedded tissue section. The section was pre-treated using heat mediated antigen retrieval with sodium citrate buffer (pH 6.0). The section was then incubated with the antibody at room temperature and detected using an HRP conjugated compact polymer system. DAB was used as the chromogen. The section was then counterstained with haematoxylin and mounted with DPX.

Please note: All products are 'FOR RESEARCH USE ONLY. NOT FOR USE IN DIAGNOSTIC OR THERAPEUTIC PROCEDURES'.