

Anti-ZNF307 Antibody

Rabbit polyclonal antibody to ZNF307

Catalog # AP60862

Product Information

Application	WB, IHC
Primary Accession	Q969J2
Reactivity	Human, Mouse, Rat
Host	Rabbit
Clonality	Polyclonal
Calculated MW	61579

Additional Information

Gene ID	387032
Other Names	ZNF307; ZNF427; Zinc finger protein with KRAB and SCAN domains 4; P373c6.1; Zinc finger protein 307; Zinc finger protein 427
Target/Specificity	KLH-conjugated synthetic peptide encompassing a sequence within the center region of human ZNF307. The exact sequence is proprietary.
Dilution	WB~~WB (1/500 - 1/2000), IHC (1/50 - 1/200) IHC~~WB (1/500 - 1/2000), IHC (1/50 - 1/200)
Format	Liquid in 0.42% Potassium phosphate, 0.87% Sodium chloride, pH 7.3, 30% glycerol, and 0.09% (W/V) sodium azide.
Storage	Store at -20 °C.Stable for 12 months from date of receipt

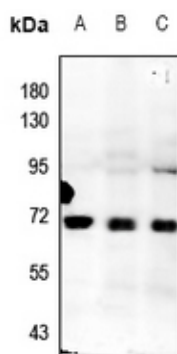
Protein Information

Name	ZKSCAN4
Synonyms	ZNF307, ZNF427
Function	May be involved in the transcriptional activation of MDM2 and EP300 genes.
Cellular Location	Nucleus {ECO:0000255 PROSITE-ProRule:PRU00187, ECO:0000269 PubMed:17910948}
Tissue Location	Expressed in adult heart, brain, placenta, lung and kidney, but not in adult liver and skeletal muscle. In 17-day old embryo, detected in liver, skeletal muscle, brain, heart and small intestine.

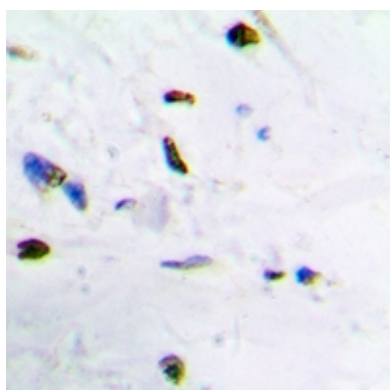
Background

KLH-conjugated synthetic peptide encompassing a sequence within the center region of human ZNF307. The exact sequence is proprietary.

Images



Western blot analysis of ZNF307 expression in MEF (A), PC12 (B), A549 (C) whole cell lysates.



Immunohistochemical analysis of ZNF307 staining in human brain formalin fixed paraffin embedded tissue section. The section was pre-treated using heat mediated antigen retrieval with sodium citrate buffer (pH 6.0). The section was then incubated with the antibody at room temperature and detected using an HRP conjugated compact polymer system. DAB was used as the chromogen. The section was then counterstained with haematoxylin and mounted with DPX.

Please note: All products are 'FOR RESEARCH USE ONLY. NOT FOR USE IN DIAGNOSTIC OR THERAPEUTIC PROCEDURES'.