

# Anti-IDH3 alpha Antibody

Rabbit polyclonal antibody to IDH3 alpha

Catalog # AP60864

## Product Information

---

Application	WB, IHC
Primary Accession	<a href="#">P50213</a>
Other Accession	<a href="#">Q9D6R2</a>
Reactivity	Human, Mouse, Rat, Monkey, Bovine
Host	Rabbit
Clonality	Polyclonal
Calculated MW	39592

## Additional Information

---

Gene ID	3419
Other Names	Isocitrate dehydrogenase [NAD] subunit alpha mitochondrial; Isocitric dehydrogenase subunit alpha; NAD(+)-specific ICDH subunit alpha
Target/Specificity	KLH-conjugated synthetic peptide encompassing a sequence within the center region of human IDH3 alpha. The exact sequence is proprietary.
Dilution	WB~~WB (1/500 - 1/2000), IHC (1/50 - 1/200) IHC~~WB (1/500 - 1/2000), IHC (1/50 - 1/200)
Format	Liquid in 0.42% Potassium phosphate, 0.87% Sodium chloride, pH 7.3, 30% glycerol, and 0.09% (W/V) sodium azide.
Storage	Store at -20 °C.Stable for 12 months from date of receipt

## Protein Information

---

Name	IDH3A ( <a href="#">HGNC:5384</a> )
Function	Catalytic subunit of the enzyme which catalyzes the decarboxylation of isocitrate (ICT) into alpha-ketoglutarate. The heterodimer composed of the alpha (IDH3A) and beta (IDH3B) subunits and the heterodimer composed of the alpha (IDH3A) and gamma (IDH3G) subunits, have considerable basal activity but the full activity of the heterotetramer (containing two subunits of IDH3A, one of IDH3B and one of IDH3G) requires the assembly and cooperative function of both heterodimers.
Cellular Location	Mitochondrion.

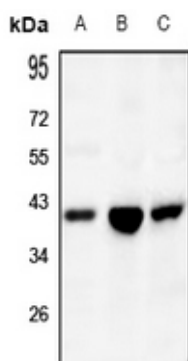
## Background

---

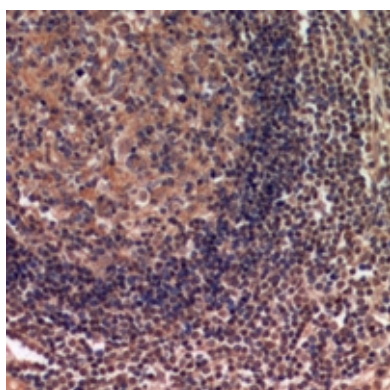
KLH-conjugated synthetic peptide encompassing a sequence within the center region of human IDH3 alpha. The exact sequence is proprietary.

## Images

---



Western blot analysis of IDH3 alpha expression in SGC7901 (A), PC12 (B), CT26 (C) whole cell lysates.



Immunohistochemical analysis of IDH3 alpha staining in human lymph gland formalin fixed paraffin embedded tissue section. The section was pre-treated using heat mediated antigen retrieval with sodium citrate buffer (pH 6.0). The section was then incubated with the antibody at room temperature and detected using an HRP conjugated compact polymer system. DAB was used as the chromogen. The section was then counterstained with haematoxylin and mounted with DPX.

Please note: All products are 'FOR RESEARCH USE ONLY. NOT FOR USE IN DIAGNOSTIC OR THERAPEUTIC PROCEDURES'.