

Anti-ORC3 Antibody

Rabbit polyclonal antibody to ORC3

Catalog # AP60866

Product Information

Application	WB
Primary Accession	Q9UBD5
Other Accession	Q9JK30
Reactivity	Human, Mouse, Rat
Host	Rabbit
Clonality	Polyclonal
Calculated MW	82254

Additional Information

Gene ID	23595
Other Names	LATHEO; ORC3L; Origin recognition complex subunit 3; Origin recognition complex subunit Latheo
Target/Specificity	Recognizes endogenous levels of ORC3 protein.
Dilution	WB~~WB (1/500 - 1/1000)
Format	Liquid in 0.42% Potassium phosphate, 0.87% Sodium chloride, pH 7.3, 30% glycerol, and 0.09% (W/V) sodium azide.
Storage	Store at -20 °C.Stable for 12 months from date of receipt

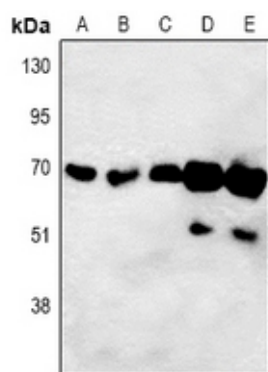
Protein Information

Name	ORC3
Synonyms	LATHEO, ORC3L
Function	Component of the origin recognition complex (ORC) that binds origins of replication. DNA-binding is ATP-dependent. The specific DNA sequences that define origins of replication have not been identified yet. ORC is required to assemble the pre-replication complex necessary to initiate DNA replication. Binds histone H3 and H4 trimethylation marks H3K9me3, H3K27me3 and H4K20me3.
Cellular Location	Nucleus. Chromosome

Background

KLH-conjugated synthetic peptide encompassing a sequence within the center region of human ORC3. The exact sequence is proprietary.

Images



Western blot analysis of ORC3 expression in HEK293T (A), HeLa (B), A549 (C), H9C2 (D), Raw264.7 (E) whole cell lysates.

Please note: All products are 'FOR RESEARCH USE ONLY. NOT FOR USE IN DIAGNOSTIC OR THERAPEUTIC PROCEDURES'.