

Anti-BUB1B Antibody

Rabbit polyclonal antibody to BUB1B

Catalog # AP60871

Product Information

Application	WB
Primary Accession	O60566
Reactivity	Human
Host	Rabbit
Clonality	Polyclonal
Calculated MW	119545

Additional Information

Gene ID	701
Other Names	BUBR1; MAD3L; SSK1; Mitotic checkpoint serine/threonine-protein kinase BUB1 beta; MAD3/BUB1-related protein kinase; hBUBR1; Mitotic checkpoint kinase MAD3L; Protein SSK1
Target/Specificity	KLH-conjugated synthetic peptide encompassing a sequence within the center region of human BUB1B. The exact sequence is proprietary.
Dilution	WB~~WB (1/500 - 1/1000)
Format	Liquid in 0.42% Potassium phosphate, 0.87% Sodium chloride, pH 7.3, 30% glycerol, and 0.09% (W/V) sodium azide.
Storage	Store at -20 °C.Stable for 12 months from date of receipt

Protein Information

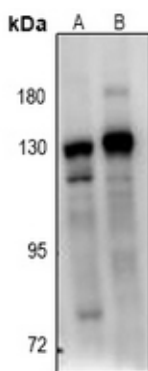
Name	BUB1B
Synonyms	BUBR1, MAD3L, SSK1
Function	Essential component of the mitotic checkpoint. Required for normal mitosis progression. The mitotic checkpoint delays anaphase until all chromosomes are properly attached to the mitotic spindle. One of its checkpoint functions is to inhibit the activity of the anaphase- promoting complex/cyclosome (APC/C) by blocking the binding of CDC20 to APC/C, independently of its kinase activity. The other is to monitor kinetochore activities that depend on the kinetochore motor CENPE. Required for kinetochore localization of CENPE. Negatively regulates PLK1 activity in interphase cells and suppresses centrosome amplification. Also implicated in triggering apoptosis in polyploid cells that exit aberrantly from mitotic arrest. May play a role for tumor suppression.

Cellular Location	Cytoplasm. Nucleus. Chromosome, centromere, kinetochore. Cytoplasm, cytoskeleton, microtubule organizing center, centrosome. Note=Cytoplasmic in interphase cells. Associates with the kinetochores in early prophase. Kinetochore localization requires BUB1, PLK1 and KNL1
Tissue Location	Highly expressed in thymus followed by spleen. Preferentially expressed in tissues with a high mitotic index

Background

KLH-conjugated synthetic peptide encompassing a sequence within the center region of human BUB1B. The exact sequence is proprietary.

Images



Western blot analysis of BUB1B expression in HeLa (A), A549 (B) whole cell lysates.

Please note: All products are 'FOR RESEARCH USE ONLY. NOT FOR USE IN DIAGNOSTIC OR THERAPEUTIC PROCEDURES'.