

Anti-FR beta Antibody

Rabbit polyclonal antibody to FR beta
Catalog # AP60875

Product Information

Application	WB
Primary Accession	P14207
Other Accession	Q05685
Reactivity	Human, Mouse, Rat
Host	Rabbit
Clonality	Polyclonal
Calculated MW	29280

Additional Information

Gene ID	2350
Other Names	Folate receptor beta; FR-beta; Folate receptor 2; Folate receptor fetal/placental; Placental folate-binding protein; FBP
Target/Specificity	Recognizes endogenous levels of FR beta protein.
Dilution	WB~~WB (1/500 - 1/1000)
Format	Liquid in 0.42% Potassium phosphate, 0.87% Sodium chloride, pH 7.3, 30% glycerol, and 0.09% (W/V) sodium azide.
Storage	Store at -20 °C.Stable for 12 months from date of receipt

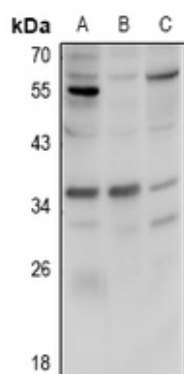
Protein Information

Name	FOLR2
Function	Binds to folate and reduced folic acid derivatives and mediates delivery of 5-methyltetrahydrofolate and folate analogs into the interior of cells. Has high affinity for folate and folic acid analogs at neutral pH. Exposure to slightly acidic pH after receptor endocytosis triggers a conformation change that strongly reduces its affinity for folates and mediates their release.
Cellular Location	Cell membrane; Lipid-anchor, GPI-anchor. Secreted
Tissue Location	Expressed in placenta and hematopoietic cells. Expression is increased in malignant tissues

Background

KLH-conjugated synthetic peptide encompassing a sequence within the N-term region of human FR beta. The exact sequence is proprietary.

Images



Western blot analysis of FR beta expression in HCT116 (A), CT26 (B), PC12 (C) whole cell lysates.

Please note: All products are 'FOR RESEARCH USE ONLY. NOT FOR USE IN DIAGNOSTIC OR THERAPEUTIC PROCEDURES'.