

# Anti-P2X2 Antibody

Rabbit polyclonal antibody to P2X2

Catalog # AP60876

## Product Information

---

Application	WB
Primary Accession	<a href="#">Q9UBL9</a>
Other Accession	<a href="#">Q8K3P1</a>
Reactivity	Human, Mouse
Host	Rabbit
Clonality	Polyclonal
Calculated MW	51754

## Additional Information

---

Gene ID	22953
Other Names	P2X2; P2X purinoceptor 2; P2X2; ATP receptor; Purinergic receptor
Target/Specificity	Recognizes endogenous levels of P2X2 protein.
Dilution	WB~~WB (1/500 - 1/1000)
Format	Liquid in 0.42% Potassium phosphate, 0.87% Sodium chloride, pH 7.3, 30% glycerol, and 0.09% (W/V) sodium azide.
Storage	Store at -20 °C.Stable for 12 months from date of receipt

## Protein Information

---

Name	P2RX2 ( <a href="#">HGNC:15459</a> )
Synonyms	P2X2
Function	ATP-gated nonselective transmembrane cation channel permeable to potassium, sodium and calcium (PubMed: <a href="#">10570044</a> , PubMed: <a href="#">31636190</a> ). Activation by extracellular ATP induces a variety of cellular responses, such as excitatory postsynaptic responses in sensory neurons, neuromuscular junctions (NMJ) formation, hearing, perception of taste and peristalsis (By similarity). In the inner ear, regulates sound transduction and auditory neurotransmission, outer hair cell electromotility, inner ear gap junctions, and K(+) recycling (PubMed: <a href="#">23345450</a> ). Mediates synaptic transmission between neurons and from neurons to smooth muscle (By similarity).
Cellular Location	Cell membrane; Multi-pass membrane protein {ECO:0000250 UniProtKB:P56373}. Note=Localizes to the apical membranes of hair cells in the organ of Corti.

**Tissue Location**

Expressed in both the central and peripheral nervous system, as well as in the pituitary gland

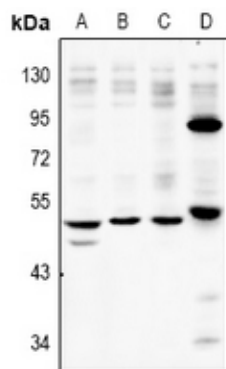
**Background**

---

KLH-conjugated synthetic peptide encompassing a sequence within the C-term region of human P2X2. The exact sequence is proprietary.

**Images**

---



Western blot analysis of P2X2 expression in A549 (A), SGC7901 (B), LO2 (C), AML12 (D) whole cell lysates.

Please note: All products are 'FOR RESEARCH USE ONLY. NOT FOR USE IN DIAGNOSTIC OR THERAPEUTIC PROCEDURES'.