

Anti-IL-15 Antibody

Rabbit polyclonal antibody to IL-15

Catalog # AP60878

Product Information

Application	WB
Primary Accession	P40933
Other Accession	P48346
Reactivity	Human, Mouse, Rat
Host	Rabbit
Clonality	Polyclonal
Calculated MW	18086

Additional Information

Gene ID	3600
Other Names	Interleukin-15; IL-15
Target/Specificity	KLH-conjugated synthetic peptide encompassing a sequence within the center region of human IL-15. The exact sequence is proprietary.
Dilution	WB~~WB (1/500 - 1/1000)
Format	Liquid in 0.42% Potassium phosphate, 0.87% Sodium chloride, pH 7.3, 30% glycerol, and 0.09% (W/V) sodium azide.
Storage	Store at -20 °C.Stable for 12 months from date of receipt

Protein Information

Name	IL15
Function	Cytokine that plays a major role in the development of inflammatory and protective immune responses to microbial invaders and parasites by modulating immune cells of both the innate and adaptive immune systems (PubMed: 15123770). Stimulates the proliferation of natural killer cells, T-cells and B-cells and promotes the secretion of several cytokines (PubMed: 8178155 , PubMed: 9326248). In monocytes, induces the production of IL8 and monocyte chemotactic protein 1/CCL2, two chemokines that attract neutrophils and monocytes respectively to sites of infection (PubMed: 9326248). Unlike most cytokines, which are secreted in soluble form, IL15 is expressed in association with its high affinity IL15RA on the surface of IL15-producing cells and delivers signals to target cells that express IL2RB and IL2RG receptor subunits (PubMed: 10233906 , PubMed: 23104097 , PubMed: 8026467). Binding to its receptor triggers the phosphorylation of JAK1 and JAK3 and the recruitment and subsequent phosphorylation of signal

transducer and activator of transcription-3/STAT3 and STAT5 (PubMed:[7568001](#)). In mast cells, induces the rapid tyrosine phosphorylation of STAT6 and thereby controls mast cell survival and release of cytokines such as IL4 (By similarity).

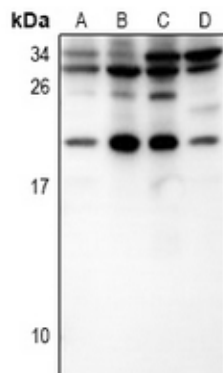
Cellular Location [Isoform IL15-S48AA]: Secreted.

Tissue Location Most abundant in placenta and skeletal muscle. It is also detected in the heart, lung, liver and kidney. IL15-S21AA is preferentially expressed in tissues such as testis and thymus

Background

KLH-conjugated synthetic peptide encompassing a sequence within the center region of human IL-15. The exact sequence is proprietary.

Images



Western blot analysis of IL-15 expression in HepG2 (A), HEK293T (B), AML12 (C), H9C2 (D) whole cell lysates.

Please note: All products are 'FOR RESEARCH USE ONLY. NOT FOR USE IN DIAGNOSTIC OR THERAPEUTIC PROCEDURES'.