

Anti-RPS15 Antibody

Rabbit polyclonal antibody to RPS15

Catalog # AP60882

Product Information

Application	WB
Primary Accession	P62841
Other Accession	P62843
Reactivity	Human, Mouse, Rat, Zebrafish, Pig, Chicken
Host	Rabbit
Clonality	Polyclonal
Calculated MW	17040

Additional Information

Gene ID	6209
Other Names	RIG; 40S ribosomal protein S15; RIG protein
Target/Specificity	KLH-conjugated synthetic peptide encompassing a sequence within the center region of human RPS15. The exact sequence is proprietary.
Dilution	WB~~WB (1/500 - 1/1000)
Format	Liquid in 0.42% Potassium phosphate, 0.87% Sodium chloride, pH 7.3, 30% glycerol, and 0.09% (W/V) sodium azide.
Storage	Store at -20 °C.Stable for 12 months from date of receipt

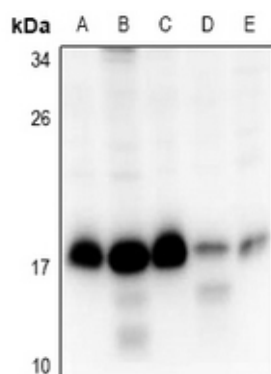
Protein Information

Name	RPS15
Synonyms	RIG
Function	Component of the small ribosomal subunit (PubMed: 23636399). The ribosome is a large ribonucleoprotein complex responsible for the synthesis of proteins in the cell (PubMed: 23636399).
Cellular Location	Cytoplasm.

Background

KLH-conjugated synthetic peptide encompassing a sequence within the center region of human RPS15. The exact sequence is proprietary.

Images



Western blot analysis of RPS15 expression in SKOV3 (A), HEK293T (B), A549 (C), AML12 (D), PC12 (E) whole cell lysates.

Please note: All products are 'FOR RESEARCH USE ONLY. NOT FOR USE IN DIAGNOSTIC OR THERAPEUTIC PROCEDURES'.