

Anti-BID p11 Antibody

Rabbit polyclonal antibody to BID p11

Catalog # AP60883

Product Information

Application	WB
Primary Accession	P55957
Reactivity	Human
Host	Rabbit
Clonality	Polyclonal
Calculated MW	21995

Additional Information

Gene ID	637
Other Names	BH3-interacting domain death agonist; p22 BID; BID
Target/Specificity	KLH-conjugated synthetic peptide encompassing a sequence within the center region of human BID p11. The exact sequence is proprietary.
Dilution	WB~~WB (1/500 - 1/1000)
Format	Liquid in 0.42% Potassium phosphate, 0.87% Sodium chloride, pH 7.3, 30% glycerol, and 0.09% (W/V) sodium azide.
Storage	Store at -20 °C.Stable for 12 months from date of receipt

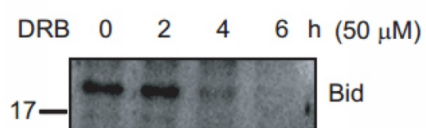
Protein Information

Name	BID
Function	Induces caspases and apoptosis (PubMed: 14583606). Counters the protective effect of BCL2 (By similarity).
Cellular Location	Cytoplasm. Mitochondrion membrane. Mitochondrion outer membrane. Note=When uncleaved, it is predominantly cytoplasmic. [BH3-interacting domain death agonist p13]: Mitochondrion membrane {ECO:0000250 UniProtKB:P70444}. Note=Associated with the mitochondrial membrane. {ECO:0000250 UniProtKB:P70444} [Isoform 3]: Cytoplasm
Tissue Location	[Isoform 2]: Expressed in spleen, pancreas and placenta (at protein level). [Isoform 4]: Expressed in lung and pancreas (at protein level).

Background

KLH-conjugated synthetic peptide encompassing a sequence within the center region of human BID p11. The exact sequence is proprietary.

Images



Western blot analysis of BID p11 expression in OPM2 (A), OPM2 DRB-treated 2 hours (B), OPM2 DRB-treated 4 hours (C), OPM2 DRB-treated 6 hours (D) whole cell lysates.

Please note: All products are 'FOR RESEARCH USE ONLY. NOT FOR USE IN DIAGNOSTIC OR THERAPEUTIC PROCEDURES'.