

Anti-FASTKD3 Antibody

Rabbit polyclonal antibody to FASTKD3

Catalog # AP60885

Product Information

Application	WB, IHC
Primary Accession	Q14CZ7
Reactivity	Human, Rat
Host	Rabbit
Clonality	Polyclonal
Calculated MW	75689

Additional Information

Gene ID	79072
Other Names	FAST kinase domain-containing protein 3
Target/Specificity	KLH-conjugated synthetic peptide encompassing a sequence within the center region of human FASTKD3. The exact sequence is proprietary.
Dilution	WB~~WB (1/500 - 1/1000), IHC (1/50 - 1/100) IHC~~WB (1/500 - 1/1000), IHC (1/50 - 1/100)
Format	Liquid in 0.42% Potassium phosphate, 0.87% Sodium chloride, pH 7.3, 30% glycerol, and 0.09% (W/V) sodium azide.
Storage	Store at -20 °C.Stable for 12 months from date of receipt

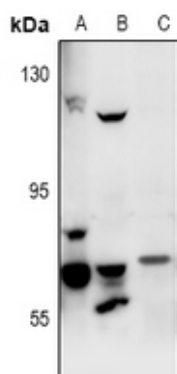
Protein Information

Name	FASTKD3
Function	Required for normal mitochondrial respiration (PubMed: 20869947). Increases steady-state levels and half-lives of a subset of mature mitochondrial mRNAs MT-ND2, MT-ND3, MT-CYTB, MT-CO2, and MT-ATP8/6. Promotes MT-CO1 mRNA translation and increases mitochondrial complex IV assembly and activity (PubMed: 27789713).
Cellular Location	Mitochondrion
Tissue Location	Expression detected in spleen, thymus, testis, ovary, colon, heart, smooth muscle, kidney, brain, lung, liver and white adipose tissue with highest expression in liver and thyroid

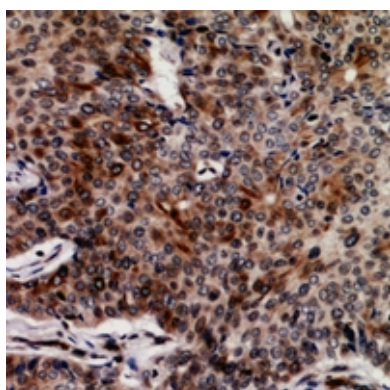
Background

KLH-conjugated synthetic peptide encompassing a sequence within the center region of human FASTKD3. The exact sequence is proprietary.

Images



Western blot analysis of FASTKD3 expression in A549 (A), HeLa (B), rat spleen (C) whole cell lysates.



Immunohistochemical analysis of FASTKD3 staining in human breast cancer formalin fixed paraffin embedded tissue section. The section was pre-treated using heat mediated antigen retrieval with sodium citrate buffer (pH 6.0). The section was then incubated with the antibody at room temperature and detected using an HRP conjugated compact polymer system. DAB was used as the chromogen. The section was then counterstained with haematoxylin and mounted with DPX.

Please note: All products are 'FOR RESEARCH USE ONLY. NOT FOR USE IN DIAGNOSTIC OR THERAPEUTIC PROCEDURES'.