

# Anti-MIC1 Antibody

Rabbit polyclonal antibody to MIC1  
Catalog # AP60888

## Product Information

---

Application	WB
Primary Accession	<a href="#">Q96DM3</a>
Other Accession	<a href="#">Q8VC42</a>
Reactivity	Human, Mouse, Rat, Monkey
Host	Rabbit
Clonality	Polyclonal
Calculated MW	74975

## Additional Information

---

Gene ID	29919
Other Names	MIC1; Uncharacterized protein C18orf8; Colon cancer-associated protein Mic1; Mic-1
Target/Specificity	KLH-conjugated synthetic peptide encompassing a sequence within the C-term region of human MIC1. The exact sequence is proprietary.
Dilution	WB~~WB (1/500 - 1/1000)
Format	Liquid in 0.42% Potassium phosphate, 0.87% Sodium chloride, pH 7.3, 30% glycerol, and 0.09% (W/V) sodium azide.
Storage	Store at -20 °C.Stable for 12 months from date of receipt

## Protein Information

---

Name	RMC1 ( <a href="#">HGNC:24326</a> )
Synonyms	C18orf8, MIC1, WDR98
Function	Component of the CCZ1-MON1 RAB7A guanine exchange factor (GEF). Acts as a positive regulator of CCZ1-MON1A/B function necessary for endosomal/autophagic flux and efficient RAB7A localization (PubMed: <a href="#">29038162</a> ).
Cellular Location	Lysosome membrane. Late endosome membrane

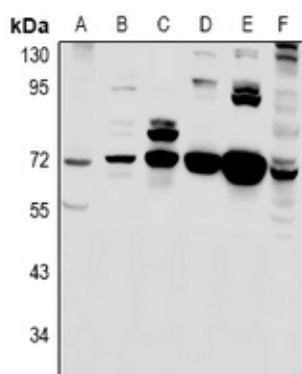
## Background

---

KLH-conjugated synthetic peptide encompassing a sequence within the C-term region of human MIC1. The exact sequence is proprietary.

## Images

---



Western blot analysis of MIC1 expression in Panc1 (A), mouse spleen (B), rat spleen (C), mouse brain (D), rat brain (E), HCT116 (F) whole cell lysates.

Please note: All products are 'FOR RESEARCH USE ONLY. NOT FOR USE IN DIAGNOSTIC OR THERAPEUTIC PROCEDURES'.