

Anti-CLK4 Antibody

Rabbit polyclonal antibody to CLK4
Catalog # AP60889

Product Information

Application	WB, IHC
Primary Accession	Q9HAZ1
Other Accession	O35493
Reactivity	Human, Mouse, Rat
Host	Rabbit
Clonality	Polyclonal
Calculated MW	57492

Additional Information

Gene ID	57396
Other Names	Dual specificity protein kinase CLK4; CDC-like kinase 4
Target/Specificity	KLH-conjugated synthetic peptide encompassing a sequence within the center region of human CLK4. The exact sequence is proprietary.
Dilution	WB~~WB (1/500 - 1/1000), IHC (1/50 - 1/100) IHC~~WB (1/500 - 1/1000), IHC (1/50 - 1/100)
Format	Liquid in 0.42% Potassium phosphate, 0.87% Sodium chloride, pH 7.3, 30% glycerol, and 0.09% (W/V) sodium azide.
Storage	Store at -20 °C.Stable for 12 months from date of receipt

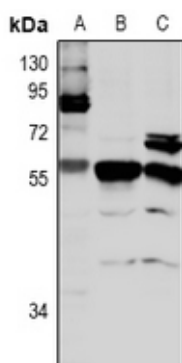
Protein Information

Name	CLK4
Function	Dual specificity kinase acting on both serine/threonine and tyrosine-containing substrates. Phosphorylates serine- and arginine- rich (SR) proteins of the spliceosomal complex and may be a constituent of a network of regulatory mechanisms that enable SR proteins to control RNA splicing. Phosphorylates SRSF1 and SRSF3. Required for the regulation of alternative splicing of MAPT/TAU. Regulates the alternative splicing of tissue factor (F3) pre-mRNA in endothelial cells.
Cellular Location	Nucleus.
Tissue Location	Expressed in liver, kidney, heart, muscle, brain and endothelial cells.

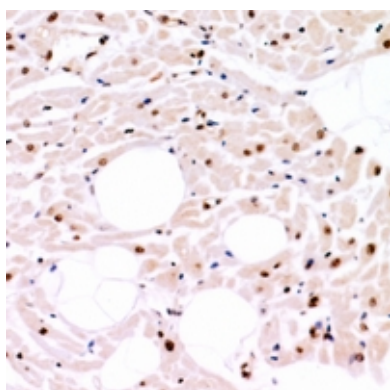
Background

KLH-conjugated synthetic peptide encompassing a sequence within the center region of human CLK4. The exact sequence is proprietary.

Images



Western blot analysis of CLK4 expression in HCT116 (A), rat brain (B), mouse brain (C) whole cell lysates.



Immunohistochemical analysis of CLK4 staining in human heart formalin fixed paraffin embedded tissue section. The section was pre-treated using heat mediated antigen retrieval with sodium citrate buffer (pH 6.0). The section was then incubated with the antibody at room temperature and detected using an HRP conjugated compact polymer system. DAB was used as the chromogen. The section was then counterstained with haematoxylin and mounted with DPX.

Please note: All products are 'FOR RESEARCH USE ONLY. NOT FOR USE IN DIAGNOSTIC OR THERAPEUTIC PROCEDURES'.