

Anti-ZNF287 Antibody

Rabbit polyclonal antibody to ZNF287

Catalog # AP60890

Product Information

Application	WB, IHC
Primary Accession	Q9HBT7
Other Accession	Q9EQB9
Reactivity	Human, Mouse
Host	Rabbit
Clonality	Polyclonal
Calculated MW	88339

Additional Information

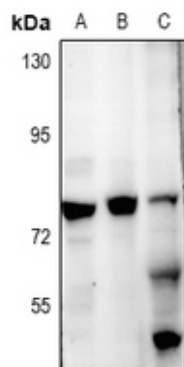
Gene ID	57336
Other Names	ZKSCAN13; Zinc finger protein 287; Zinc finger protein with KRAB and SCAN domains 13
Target/Specificity	KLH-conjugated synthetic peptide encompassing a sequence within the center region of human ZNF287. The exact sequence is proprietary.
Dilution	WB~~WB (1/500 - 1/1000), IHC (1/50 - 1/100) IHC~~WB (1/500 - 1/1000), IHC (1/50 - 1/100)
Format	Liquid in 0.42% Potassium phosphate, 0.87% Sodium chloride, pH 7.3, 30% glycerol, and 0.09% (W/V) sodium azide.
Storage	Store at -20 °C.Stable for 12 months from date of receipt

Protein Information

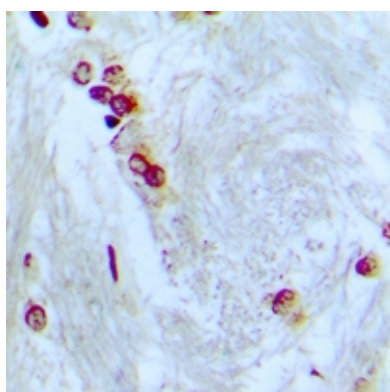
Name	ZNF287 (HGNC:13502)
Synonyms	ZKSCAN13
Function	May be involved in transcriptional regulation.
Cellular Location	Nucleus.

Background

KLH-conjugated synthetic peptide encompassing a sequence within the center region of human ZNF287. The exact sequence is proprietary.



Western blot analysis of ZNF287 expression in HEK293T (A), A549 (B), mouse brain (C) whole cell lysates.



Immunohistochemical analysis of ZNF287 staining in human brain formalin fixed paraffin embedded tissue section. The section was pre-treated using heat mediated antigen retrieval with sodium citrate buffer (pH 6.0). The section was then incubated with the antibody at room temperature and detected using an HRP conjugated compact polymer system. DAB was used as the chromogen. The section was then counterstained with haematoxylin and mounted with DPX.

Please note: All products are 'FOR RESEARCH USE ONLY. NOT FOR USE IN DIAGNOSTIC OR THERAPEUTIC PROCEDURES'.