

# Anti-Annexin A10 Antibody

Rabbit polyclonal antibody to Annexin A10  
Catalog # AP60892

## Product Information

---

Application	WB
Primary Accession	<a href="#">Q9UJ72</a>
Other Accession	<a href="#">Q9QZ10</a>
Reactivity	Human, Mouse
Host	Rabbit
Clonality	Polyclonal
Calculated MW	37278

## Additional Information

---

Gene ID	11199
Other Names	ANX14; Annexin A10; Annexin-10; Annexin-14
Target/Specificity	Recognizes endogenous levels of Annexin A10 protein.
Dilution	WB~~WB (1/500 - 1/1000)
Format	Liquid in 0.42% Potassium phosphate, 0.87% Sodium chloride, pH 7.3, 30% glycerol, and 0.09% (W/V) sodium azide.
Storage	Store at -20 °C.Stable for 12 months from date of receipt

## Protein Information

---

Name	ANXA10
Synonyms	ANX14

## Background

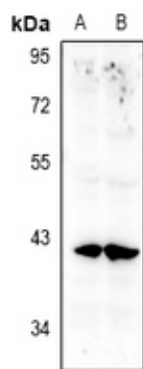
---

KLH-conjugated synthetic peptide encompassing a sequence within the C-term region of human Annexin A10. The exact sequence is proprietary.

## Images

---

Western blot analysis of Annexin A10 expression in SGC7901 (A), LO2 (B) whole cell lysates.



Please note: All products are 'FOR RESEARCH USE ONLY. NOT FOR USE IN DIAGNOSTIC OR THERAPEUTIC PROCEDURES'.