

# Anti-NOL10 Antibody

Rabbit polyclonal antibody to NOL10

Catalog # AP60896

## Product Information

---

|                          |                        |
|--------------------------|------------------------|
| <b>Application</b>       | WB, IHC                |
| <b>Primary Accession</b> | <a href="#">Q9BSC4</a> |
| <b>Other Accession</b>   | <a href="#">Q5RJG1</a> |
| <b>Reactivity</b>        | Human, Mouse, Rat      |
| <b>Host</b>              | Rabbit                 |
| <b>Clonality</b>         | Polyclonal             |
| <b>Calculated MW</b>     | 80302                  |

## Additional Information

---

|                           |   |
|---------------------------|---|
| <b>Gene ID</b>            | 79954   |
| <b>Other Names</b>        | Nucleolar protein 10  |
| <b>Target/Specificity</b> | Recognizes endogenous levels of NOL10 protein.  |
| <b>Dilution</b>           | WB~~WB (1/500 - 1/1000), IHC (1/50 - 1/100) IHC~~WB (1/500 - 1/1000), IHC (1/50 - 1/100)                        |
| <b>Format</b>             | Liquid in 0.42% Potassium phosphate, 0.87% Sodium chloride, pH 7.3, 30% glycerol, and 0.09% (W/V) sodium azide. |
| <b>Storage</b>            | Store at -20 °C.Stable for 12 months from date of receipt   |

## Protein Information

---

|                          |                     |
|--------------------------|---------------------|
| <b>Name</b>              | NOL10               |
| <b>Cellular Location</b> | Nucleus, nucleolus. |

## Background

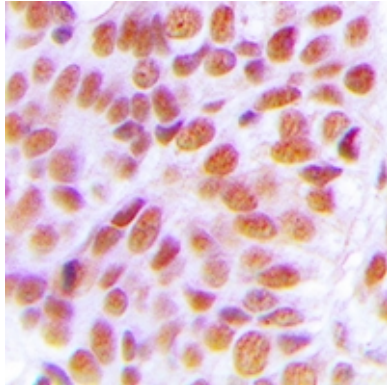
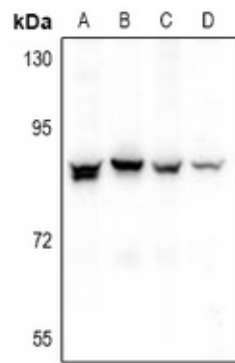
---

KLH-conjugated synthetic peptide encompassing a sequence within the C-term region of human NOL10. The exact sequence is proprietary.

## Images

---

Western blot analysis of NOL10 expression in A549 (A), HepG2 (B), PC12 (C), AML12 (D) whole cell lysates.



Immunohistochemical analysis of NOL10 staining in human breast cancer formalin fixed paraffin embedded tissue section. The section was pre-treated using heat mediated antigen retrieval with sodium citrate buffer (pH 6.0). The section was then incubated with the antibody at room temperature and detected using an HRP conjugated compact polymer system. DAB was used as the chromogen. The section was then counterstained with haematoxylin and mounted with DPX.

Please note: All products are 'FOR RESEARCH USE ONLY. NOT FOR USE IN DIAGNOSTIC OR THERAPEUTIC PROCEDURES'.