

Anti-ROCK2 Antibody

Rabbit polyclonal antibody to ROCK2

Catalog # AP60897

Product Information

Application	WB
Primary Accession	O75116
Other Accession	P70336
Reactivity	Human, Mouse, Rat, Pig, Bovine
Host	Rabbit
Clonality	Polyclonal
Calculated MW	160900

Additional Information

Gene ID	9475
Other Names	KIAA0619; Rho-associated protein kinase 2; Rho kinase 2; Rho-associated coiled-coil-containing protein kinase 2; Rho-associated coiled-coil-containing protein kinase II; ROCK-II; p164 ROCK-2
Target/Specificity	Recognizes endogenous levels of ROCK2 protein.
Dilution	WB~~WB (1/500 - 1/1000)
Format	Liquid in 0.42% Potassium phosphate, 0.87% Sodium chloride, pH 7.3, 30% glycerol, and 0.09% (W/V) sodium azide.
Storage	Store at -20 °C.Stable for 12 months from date of receipt

Protein Information

Name	ROCK2
Synonyms	KIAA0619
Function	Protein kinase which is a key regulator of actin cytoskeleton and cell polarity. Involved in regulation of smooth muscle contraction, actin cytoskeleton organization, stress fiber and focal adhesion formation, neurite retraction, cell adhesion and motility via phosphorylation of ADD1, BRCA2, CNN1, EZR, DPYSL2, EP300, MSN, MYL9/MLC2, NPM1, RDX, PPP1R12A and VIM. Phosphorylates SORL1 and IRF4. Acts as a negative regulator of VEGF-induced angiogenic endothelial cell activation. Positively regulates the activation of p42/MAPK1- p44/MAPK3 and of p90RSK/RPS6KA1 during myogenic differentiation. Plays an important role in the timely initiation of centrosome duplication. Inhibits keratinocyte terminal differentiation. May regulate closure of the eyelids and ventral body wall through organization of

actomyosin bundles. Plays a critical role in the regulation of spine and synaptic properties in the hippocampus. Plays an important role in generating the circadian rhythm of the aortic myofilament Ca^{2+} sensitivity and vascular contractility by modulating the myosin light chain phosphorylation.

Cellular Location

Cytoplasm. Cell membrane; Peripheral membrane protein. Nucleus. Cytoplasm, cytoskeleton, microtubule organizing center, centrosome
Note=Cytoplasmic, and associated with actin microfilaments and the plasma membrane.

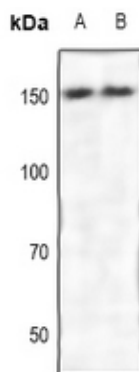
Tissue Location

Expressed in the brain (at protein level).

Background

KLH-conjugated synthetic peptide encompassing a sequence within the center region of human ROCK2. The exact sequence is proprietary.

Images



Western blot analysis of ROCK2 expression in mouse liver (A), rat liver (B) whole cell lysates.

Please note: All products are 'FOR RESEARCH USE ONLY. NOT FOR USE IN DIAGNOSTIC OR THERAPEUTIC PROCEDURES'.