

Anti-NuSAP Antibody

Rabbit polyclonal antibody to NuSAP

Catalog # AP60903

Product Information

Application	WB
Primary Accession	Q9BXS6
Other Accession	Q9ERH4
Reactivity	Human, Mouse, Rat, Bovine, Drosophila
Host	Rabbit
Clonality	Polyclonal
Calculated MW	49452

Additional Information

Gene ID	51203
Other Names	ANKT; Nucleolar and spindle-associated protein 1; NuSAP
Target/Specificity	Recognizes endogenous levels of NuSAP protein.
Dilution	WB~~WB (1/500 - 1/1000)
Format	Liquid in 0.42% Potassium phosphate, 0.87% Sodium chloride, pH 7.3, 30% glycerol, and 0.09% (W/V) sodium azide.
Storage	Store at -20 °C.Stable for 12 months from date of receipt

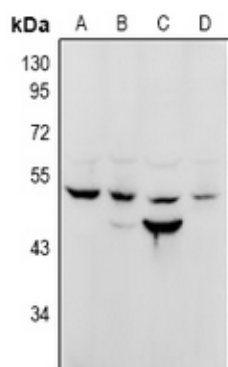
Protein Information

Name	NUSAP1
Synonyms	ANKT
Function	Microtubule-associated protein with the capacity to bundle and stabilize microtubules (By similarity). May associate with chromosomes and promote the organization of mitotic spindle microtubules around them.
Cellular Location	Cytoplasm. Nucleus, nucleolus. Cytoplasm, cytoskeleton, spindle Chromosome. Note=Found in the cytoplasm and nucleolus during interphase and redistributes to the mitotic spindle in prometaphase (By similarity). Localizes to the mitotic spindle during anaphase and telophase then disappears from around the chromosomes during cytokinesis (By similarity). Localizes to multiple distinct regions of chromosomes throughout mitosis. {ECO:0000250, ECO:0000269 PubMed:17276916, ECO:0000269 PubMed:17618083}

Background

KLH-conjugated synthetic peptide encompassing a sequence within the C-term region of human NuSAP. The exact sequence is proprietary.

Images



Western blot analysis of NuSAP expression in CT26 (A), PC12 (B), HCT116 (C), PC3 (D) whole cell lysates.

Please note: All products are 'FOR RESEARCH USE ONLY. NOT FOR USE IN DIAGNOSTIC OR THERAPEUTIC PROCEDURES'.