

Anti-CEP55 Antibody

Rabbit polyclonal antibody to CEP55

Catalog # AP60907

Product Information

Application	WB, IHC
Primary Accession	Q53EZ4
Reactivity	Human
Host	Rabbit
Clonality	Polyclonal
Calculated MW	54178

Additional Information

Gene ID	55165
Other Names	C10orf3; URCC6; Centrosomal protein of 55 kDa; Cep55; Up-regulated in colon cancer 6
Target/Specificity	KLH-conjugated synthetic peptide encompassing a sequence within the center region of human CEP55. The exact sequence is proprietary.
Dilution	WB~~WB (1/500 - 1/1000), IHC (1/50 - 1/100) IHC~~WB (1/500 - 1/1000), IHC (1/50 - 1/100)
Format	Liquid in 0.42% Potassium phosphate, 0.87% Sodium chloride, pH 7.3, 30% glycerol, and 0.09% (W/V) sodium azide.
Storage	Store at -20 °C.Stable for 12 months from date of receipt

Protein Information

Name	CEP55 (HGNC:1161)
Function	Plays a role in mitotic exit and cytokinesis (PubMed: 16198290 , PubMed: 17853893). Recruits PDCD6IP and TSG101 to midbody during cytokinesis. Required for successful completion of cytokinesis (PubMed: 17853893). Not required for microtubule nucleation (PubMed: 16198290). Plays a role in the development of the brain and kidney (PubMed: 28264986).
Cellular Location	Cytoplasm. Cytoplasm, cytoskeleton, microtubule organizing center, centrosome, centriole. Cytoplasm, cytoskeleton, microtubule organizing center, centrosome. Cleavage furrow. Midbody, Midbody ring. Note=Present at the centrosomes at interphase. A small portion is associated preferentially with the mother centriole, whereas the majority localizes to the pericentriolar material. During mitosis, loses affinity for the centrosome at the onset of

prophase and diffuses throughout the cell. This dissociation from the centrosome is phosphorylation-dependent. May remain localized at the centrosome during mitosis in certain cell types. Appears at the cleavage furrow in late anaphase and in the midbody in cytokinesis

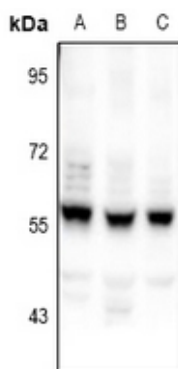
Tissue Location

Expressed in embryonic brain (PubMed:28264986). Expressed in fetal brain ganglionic eminence, kidney tubules and multinucleate neurons in the temporal cortex (PubMed:28264986) Expressed in adult brain, cerebellum, kidney tubules, intestine and muscles (at protein level) (PubMed:28264986, PubMed:28295209). Widely expressed, mostly in proliferative tissues. Highly expressed in testis Intermediate levels in adult and fetal thymus, as well as in various cancer cell lines. Low levels in different parts of the digestive tract, bone marrow, lymph nodes, placenta, fetal heart and fetal spleen. Hardly detected in brain.

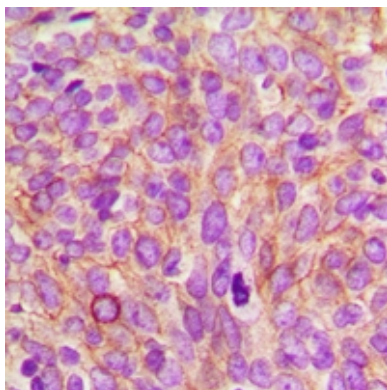
Background

KLH-conjugated synthetic peptide encompassing a sequence within the center region of human CEP55. The exact sequence is proprietary.

Images



Western blot analysis of CEP55 expression in HEK293T (A), HCT116 (B), A549 (C) whole cell lysates.



Immunohistochemical analysis of CEP55 staining in human breast cancer formalin fixed paraffin embedded tissue section. The section was pre-treated using heat mediated antigen retrieval with sodium citrate buffer (pH 6.0). The section was then incubated with the antibody at room temperature and detected using an HRP conjugated compact polymer system. DAB was used as the chromogen. The section was then counterstained with haematoxylin and mounted with DPX.

Please note: All products are 'FOR RESEARCH USE ONLY. NOT FOR USE IN DIAGNOSTIC OR THERAPEUTIC PROCEDURES'.