

Anti-RAP2B Antibody

Rabbit polyclonal antibody to RAP2B

Catalog # AP60911

Product Information

Application	WB
Primary Accession	P61225
Other Accession	P61226
Reactivity	Human, Mouse, Rat, Pig
Host	Rabbit
Clonality	Polyclonal
Calculated MW	20504

Additional Information

Gene ID	5912
Other Names	Ras-related protein Rap-2b
Target/Specificity	KLH-conjugated synthetic peptide encompassing a sequence within the center region of human RAP2B. The exact sequence is proprietary.
Dilution	WB~~WB (1/500 - 1/1000)
Format	Liquid in 0.42% Potassium phosphate, 0.87% Sodium chloride, pH 7.3, 30% glycerol, and 0.09% (W/V) sodium azide.
Storage	Store at -20 °C.Stable for 12 months from date of receipt

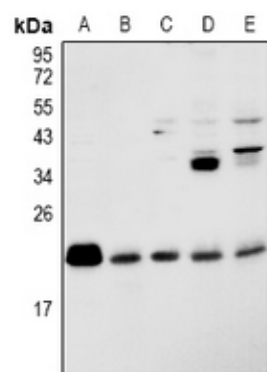
Protein Information

Name	RAP2B
Function	Small GTP-binding protein which cycles between a GDP-bound inactive and a GTP-bound active form. Involved in EGFR and CHRM3 signaling pathways through stimulation of PLCE1. May play a role in cytoskeletal rearrangements and regulate cell spreading through activation of the effector TNIK. May regulate membrane vesiculation in red blood cells.
Cellular Location	Recycling endosome membrane; Lipid-anchor; Cytoplasmic side. Note=Associated with red blood cells- released vesicles
Tissue Location	Expressed in red blood cells (at protein level).

Background

KLH-conjugated synthetic peptide encompassing a sequence within the center region of human RAP2B. The exact sequence is proprietary.

Images



Western blot analysis of RAP2B expression in K562 (A), Jurkat (B), THP1 (C), BV2 (D), PMVEC (E) whole cell lysates.

Please note: All products are 'FOR RESEARCH USE ONLY. NOT FOR USE IN DIAGNOSTIC OR THERAPEUTIC PROCEDURES'.