

# Anti-VPS26B Antibody

Rabbit polyclonal antibody to VPS26B  
Catalog # AP60912

## Product Information

---

<b>Application</b>	WB
<b>Primary Accession</b>	<a href="#">Q4G0F5</a>
<b>Other Accession</b>	<a href="#">Q8C0E2</a>
<b>Reactivity</b>	Human, Mouse, Rat, Zebrafish
<b>Host</b>	Rabbit
<b>Clonality</b>	Polyclonal
<b>Calculated MW</b>	39155

## Additional Information

---

<b>Gene ID</b>	112936
<b>Other Names</b>	Vacuolar protein sorting-associated protein 26B; Vesicle protein sorting 26B
<b>Target/Specificity</b>	KLH-conjugated synthetic peptide encompassing a sequence within the center region of human VPS26B. The exact sequence is proprietary.
<b>Dilution</b>	WB--WB (1/500 - 1/1000)
<b>Format</b>	Liquid in 0.42% Potassium phosphate, 0.87% Sodium chloride, pH 7.3, 30% glycerol, and 0.09% (W/V) sodium azide.
<b>Storage</b>	Store at -20 °C. Stable for 12 months from date of receipt

## Protein Information

---

<b>Name</b>	VPS26B
<b>Function</b>	Acts as a component of the retromer cargo-selective complex (CSC). The CSC is believed to be the core functional component of retromer or respective retromer complex variants acting to prevent missorting of selected transmembrane cargo proteins into the lysosomal degradation pathway. The recruitment of the CSC to the endosomal membrane involves RAB7A and SNX3. The SNX-BAR retromer mediates retrograde transport of cargo proteins from endosomes to the trans- Golgi network (TGN) and is involved in endosome-to-plasma membrane transport for cargo protein recycling. The SNX3-retromer mediates the retrograde transport of WLS distinct from the SNX-BAR retromer pathway. The SNX27-retromer is believed to be involved in endosome-to-plasma membrane trafficking and recycling of a broad spectrum of cargo proteins. The CSC seems to act as recruitment hub for other proteins, such as the WASH complex and TBC1D5. May be involved in retrograde transport of SORT1 but not of IGF2R. Acts redundantly with

VSP26A in SNX-27 mediated endocytic recycling of SLC2A1/GLUT1 (By similarity).

### Cellular Location

Cytoplasm {ECO:0000250|UniProtKB:Q8C0E2}. Membrane; Peripheral membrane protein {ECO:0000250|UniProtKB:Q8C0E2} Early endosome {ECO:0000250|UniProtKB:Q8C0E2}. Late endosome {ECO:0000250|UniProtKB:Q8C0E2}. Note=Localizes to early and late endosomal structures (By similarity). {ECO:0000250|UniProtKB:Q8C0E2}

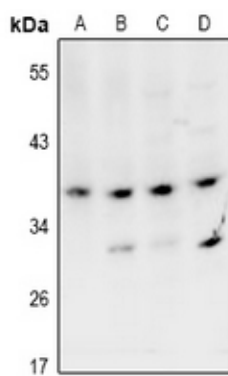
### Background

---

KLH-conjugated synthetic peptide encompassing a sequence within the center region of human VPS26B. The exact sequence is proprietary.

### Images

---



Western blot analysis of VPS26B expression in MCF7 (A), HeLa (B), PC12 (C), AML12 (D) whole cell lysates.

Please note: All products are 'FOR RESEARCH USE ONLY. NOT FOR USE IN DIAGNOSTIC OR THERAPEUTIC PROCEDURES'.