

Anti-MRPL50 Antibody

Rabbit polyclonal antibody to MRPL50

Catalog # AP60913

Product Information

Application	WB
Primary Accession	Q8N5N7
Other Accession	Q8VDT9
Reactivity	Human, Mouse, Rat
Host	Rabbit
Clonality	Polyclonal
Calculated MW	18325

Additional Information

Gene ID	54534
Other Names	39S ribosomal protein L50 mitochondrial; L50mt; MRP-L50
Target/Specificity	KLH-conjugated synthetic peptide encompassing a sequence within the C-term region of human MRPL50. The exact sequence is proprietary.
Dilution	WB~~WB (1/500 - 1/1000)
Format	Liquid in 0.42% Potassium phosphate, 0.87% Sodium chloride, pH 7.3, 30% glycerol, and 0.09% (W/V) sodium azide.
Storage	Store at -20 °C.Stable for 12 months from date of receipt

Protein Information

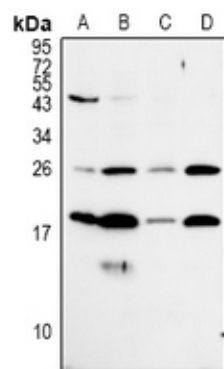
Name	MRPL50
Cellular Location	Mitochondrion

Background

KLH-conjugated synthetic peptide encompassing a sequence within the C-term region of human MRPL50. The exact sequence is proprietary.

Images

Western blot analysis of MRPL50 expression in PC12 (A), AML12 (B), A549 (C), HepG2 (D) whole cell lysates.



Please note: All products are 'FOR RESEARCH USE ONLY. NOT FOR USE IN DIAGNOSTIC OR THERAPEUTIC PROCEDURES'.