

Anti-LAT (pY161) Antibody

Rabbit polyclonal antibody to LAT (pY161)

Catalog # AP60916

Product Information

| | |
|-------------------|------------------------|
| Application | WB |
| Primary Accession | O43561 |
| Other Accession | O54957 |
| Reactivity | Human, Mouse, Rat |
| Host | Rabbit |
| Clonality | Polyclonal |
| Calculated MW | 27930 |

Additional Information

| | |
|--------------------|---|
| Gene ID | 27040 |
| Other Names | Linker for activation of T-cells family member 1; 36 kDa phospho-tyrosine adapter protein; pp36; p36-38 |
| Target/Specificity | Recognizes endogenous levels of LAT (pY161) protein. |
| Dilution | WB~~WB (1/500 - 1/1000) |
| Format | Liquid in 0.42% Potassium phosphate, 0.87% Sodium chloride, pH 7.3, 30% glycerol, and 0.09% (W/V) sodium azide. |
| Storage | Store at -20 °C.Stable for 12 months from date of receipt |

Protein Information

| | |
|-------------------|---|
| Name | LAT |
| Function | Required for TCR (T-cell antigen receptor)- and pre-TCR- mediated signaling, both in mature T-cells and during their development (PubMed: 23514740 , PubMed: 25907557). Involved in FCGR3 (low affinity immunoglobulin gamma Fc region receptor III)-mediated signaling in natural killer cells and FCER1 (high affinity immunoglobulin epsilon receptor)-mediated signaling in mast cells. Couples activation of these receptors and their associated kinases with distal intracellular events such as mobilization of intracellular calcium stores, PKC activation, MAPK activation or cytoskeletal reorganization through the recruitment of PLCG1, GRB2, GRAP2, and other signaling molecules. |
| Cellular Location | Cell membrane; Single-pass type III membrane protein. Note=Present in lipid rafts Expressed in thymus, T-cells, NK cells, mast cells and, at lower levels, in |

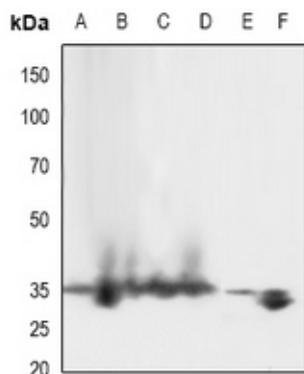
Tissue Location

spleen. Present in T-cells but not B-cells (at protein level).

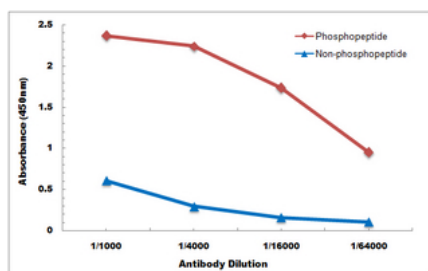
Background

KLH-conjugated synthetic peptide encompassing a sequence within the center region of human LAT. The exact sequence is proprietary.

Images



Western blot analysis of LAT (pY161) expression in rat heart (A), rat lung (B), mouse heart (C), mouse lung (D), HEK293T (E), Jurkat (F) whole cell lysates.



Direct ELISA antibody dose-response curve using Anti-LAT (pY161) Antibody. Antigen (phosphopeptide and non-phosphopeptide) concentration is 5 ug/ml. Goat Anti-Rabbit IgG (H&L) - HRP was used as the secondary antibody, and signal was developed by TMB substrate.

Please note: All products are 'FOR RESEARCH USE ONLY. NOT FOR USE IN DIAGNOSTIC OR THERAPEUTIC PROCEDURES'.