

Anti-CD45 (pY1216) Antibody

Rabbit polyclonal antibody to CD45 (pY1216)

Catalog # AP60918

Product Information

Application	WB
Primary Accession	P08575
Other Accession	P06800
Reactivity	Human, Mouse, Rat
Host	Rabbit
Clonality	Polyclonal
Calculated MW	147486

Additional Information

Gene ID	5788
Other Names	CD45; Receptor-type tyrosine-protein phosphatase C; Leukocyte common antigen; L-CA; T200; CD45
Target/Specificity	KLH-conjugated synthetic peptide encompassing a sequence within the C-term region of human CD45. The exact sequence is proprietary.
Dilution	WB~~WB (1/500 - 1/1000)
Format	Liquid in 0.42% Potassium phosphate, 0.87% Sodium chloride, pH 7.3, 30% glycerol, and 0.09% (W/V) sodium azide.
Storage	Store at -20 °C.Stable for 12 months from date of receipt

Protein Information

Name	PTPRC (HGNC:9666)
Synonyms	CD45
Function	Protein tyrosine-protein phosphatase required for T-cell activation through the antigen receptor (PubMed: 35767951). Acts as a positive regulator of T-cell coactivation upon binding to DPP4. The first PTPase domain has enzymatic activity, while the second one seems to affect the substrate specificity of the first one. Upon T-cell activation, recruits and dephosphorylates SKAP1 and FYN. Dephosphorylates LYN, and thereby modulates LYN activity (By similarity). Interacts with CLEC10A at antigen presenting cell-T cell contact; CLEC10A on immature dendritic cells recognizes Tn antigen- carrying PTPRC/CD45 receptor on effector T cells and modulates T cell activation threshold to limit autoreactivity.

Cellular Location

Cell membrane; Single-pass type I membrane protein. Membrane raft. Synapse. Note=Colocalized with DPP4 in membrane rafts.

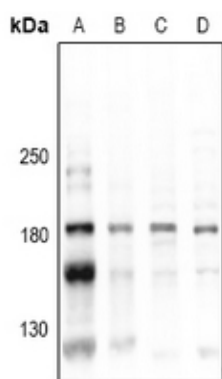
Tissue Location

Isoform 1: Detected in thymocytes. Isoform 2: Detected in thymocytes. Isoform 3: Detected in thymocytes. Isoform 4: Not detected in thymocytes. Isoform 5: Detected in thymocytes. Isoform 6: Not detected in thymocytes. Isoform 7: Detected in thymocytes. Isoform 8: Not detected in thymocytes.

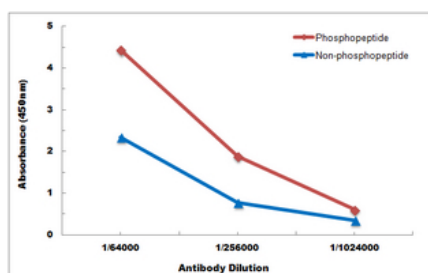
Background

KLH-conjugated synthetic peptide encompassing a sequence within the C-term region of human CD45. The exact sequence is proprietary.

Images



Western blot analysis of CD45 (pY1216) expression in HEK293T (A), MCF7 (B), PC12 (C), AML12 (D) whole cell lysates.



Direct ELISA antibody dose-response curve using Anti-CD45 (pY1216) Antibody. Antigen (phosphopeptide and non-phosphopeptide) concentration is 5 ug/ml. Goat Anti-Rabbit IgG (H&L) - HRP was used as the secondary antibody, and signal was developed by TMB substrate.

Please note: All products are 'FOR RESEARCH USE ONLY. NOT FOR USE IN DIAGNOSTIC OR THERAPEUTIC PROCEDURES'.