

# Anti-HP1 alpha Antibody

Rabbit polyclonal antibody to HP1 alpha  
Catalog # AP60922

## Product Information

Application	WB, IHC
Primary Accession	<a href="#">P45973</a>
Other Accession	<a href="#">Q61686</a>
Reactivity	Human, Mouse, Rat
Host	Rabbit
Clonality	Polyclonal
Calculated MW	22225

## Additional Information

Gene ID	23468
Other Names	HP1A; Chromobox protein homolog 5; Antigen p25; Heterochromatin protein 1 homolog alpha; HP1 alpha
Target/Specificity	Recognizes endogenous levels of HP1 alpha protein.
Dilution	WB~~WB (1/500 - 1/1000), IHC (1/50 - 1/100) IHC~~WB (1/500 - 1/1000), IHC (1/50 - 1/100)
Format	Liquid in 0.42% Potassium phosphate, 0.87% Sodium chloride, pH 7.3, 30% glycerol, and 0.09% (W/V) sodium azide.
Storage	Store at -20 °C.Stable for 12 months from date of receipt

## Protein Information

Name	CBX5
Synonyms	HP1A
Function	<p>Component of heterochromatin that recognizes and binds histone H3 tails methylated at 'Lys-9' (H3K9me), leading to epigenetic repression. In contrast, it is excluded from chromatin when 'Tyr-41' of histone H3 is phosphorylated (H3Y41ph) (PubMed:<a href="#">19783980</a>). May contribute to the association of heterochromatin with the inner nuclear membrane by interactions with the lamin-B receptor (LBR) (PubMed:<a href="#">19783980</a>). Involved in the formation of kinetochore through interaction with the MIS12 complex subunit NSL1 (PubMed:<a href="#">19783980</a>, PubMed:<a href="#">20231385</a>). Required for the formation of the inner centromere (PubMed:<a href="#">20231385</a>).</p>

Nucleus. Chromosome. Chromosome, centromere. Note=Colocalizes with

## Cellular Location

HNRNPU in the nucleus (PubMed:19617346). Component of centromeric and pericentromeric heterochromatin. Associates with chromosomes during mitosis. Associates specifically with chromatin during metaphase and anaphase (PubMed:19617346). Localizes to sites of DNA damage (PubMed:28977666)

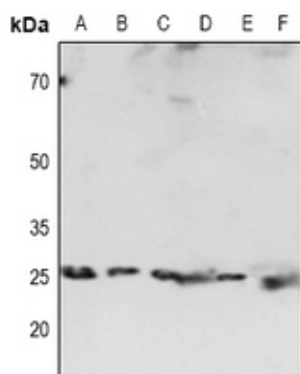
## Background

---

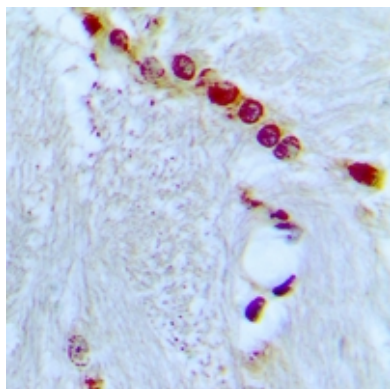
KLH-conjugated synthetic peptide encompassing a sequence within the center region of human HP1 alpha. The exact sequence is proprietary.

## Images

---



Western blot analysis of HP1 alpha expression in Hela (A), PC3 (B), THP1 (C), mouse heart (D), mouse brain (E), rat heart (F) whole cell lysates.



Immunohistochemical analysis of HP1 alpha staining in human brain formalin fixed paraffin embedded tissue section. The section was pre-treated using heat mediated antigen retrieval with sodium citrate buffer (pH 6.0). The section was then incubated with the antibody at room temperature and detected using an HRP conjugated compact polymer system. DAB was used as the chromogen. The section was then counterstained with haematoxylin and mounted with DPX.

Please note: All products are 'FOR RESEARCH USE ONLY. NOT FOR USE IN DIAGNOSTIC OR THERAPEUTIC PROCEDURES'.