

Anti-OTUB1 (pS187) Antibody

Rabbit polyclonal antibody to OTUB1 (pS187)

Catalog # AP60926

Product Information

Application	WB
Primary Accession	Q96FW1
Other Accession	Q7TQI3
Reactivity	Human, Mouse, Rat
Host	Rabbit
Clonality	Polyclonal
Calculated MW	31284

Additional Information

Gene ID	55611
Other Names	OTB1; OTU1; Ubiquitin thioesterase OTUB1; Deubiquitinating enzyme OTUB1; OTU domain-containing ubiquitin aldehyde-binding protein 1; Otubain-1; hOTU1; Ubiquitin-specific-processing protease OTUB1
Target/Specificity	KLH-conjugated synthetic peptide encompassing a sequence within the center region of human OTUB1. The exact sequence is proprietary.
Dilution	WB~~WB (1/500 - 1/1000)
Format	Liquid in 0.42% Potassium phosphate, 0.87% Sodium chloride, pH 7.3, 30% glycerol, and 0.09% (W/V) sodium azide.
Storage	Store at -20 °C.Stable for 12 months from date of receipt

Protein Information

Name	OTUB1
Synonyms	OTB1, OTU1
Function	Hydrolase that can specifically remove 'Lys-48'-linked conjugated ubiquitin from proteins and plays an important regulatory role at the level of protein turnover by preventing degradation (PubMed: 12401499 , PubMed: 12704427 , PubMed: 14661020 , PubMed: 23827681). Regulator of T-cell anergy, a phenomenon that occurs when T-cells are rendered unresponsive to antigen rechallenge and no longer respond to their cognate antigen (PubMed: 14661020). Acts via its interaction with RNF128/GRAIL, a crucial inductor of CD4 T-cell anergy (PubMed: 14661020). Isoform 1 destabilizes RNF128, leading to prevent anergy (PubMed: 14661020). In contrast, isoform 2 stabilizes RNF128 and promotes anergy (PubMed: 14661020). Surprisingly, it

regulates RNF128- mediated ubiquitination, but does not deubiquitinate polyubiquitinated RNF128 (PubMed:[14661020](#)). Deubiquitinates estrogen receptor alpha (ESR1) (PubMed:[19383985](#)). Mediates deubiquitination of 'Lys-48'-linked polyubiquitin chains, but not 'Lys-63'-linked polyubiquitin chains (PubMed:[18954305](#), PubMed:[19211026](#), PubMed:[23827681](#)). Not able to cleave di-ubiquitin (PubMed:[18954305](#), PubMed:[23827681](#)). Also capable of removing NEDD8 from NEDD8 conjugates, but with a much lower preference compared to 'Lys-48'-linked ubiquitin (PubMed:[18954305](#), PubMed:[23827681](#)).

Cellular Location

Cytoplasm {ECO:0000250|UniProtKB:B2RYG6}.

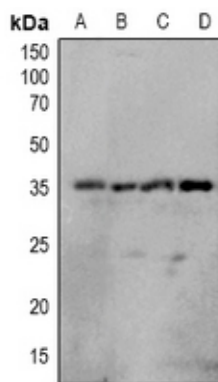
Tissue Location

Isoform 1 is ubiquitous. Isoform 2 is expressed only in lymphoid tissues such as tonsils, lymph nodes and spleen, as well as peripheral blood mononuclear cells

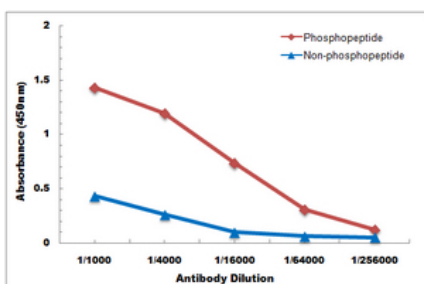
Background

KLH-conjugated synthetic peptide encompassing a sequence within the center region of human OTUB1. The exact sequence is proprietary.

Images



Western blot analysis of OTUB1 (pS187) expression in Hela (A), Jurkat (B), NIH3T3 (C), mouse brain (D) whole cell lysates.



Direct ELISA antibody dose-response curve using Anti-OTUB1 (pS187) Antibody. Antigen (phosphopeptide and non-phosphopeptide) concentration is 5 ug/ml. Goat Anti-Rabbit IgG (H&L) - HRP was used as the secondary antibody, and signal was developed by TMB substrate.

Please note: All products are 'FOR RESEARCH USE ONLY. NOT FOR USE IN DIAGNOSTIC OR THERAPEUTIC PROCEDURES'.