

# Anti-CDC25A (pS82) Antibody

Rabbit polyclonal antibody to CDC25A (pS82)

Catalog # AP60928

## Product Information

---

Application	WB
Primary Accession	<a href="#">P30304</a>
Other Accession	<a href="#">P48964</a>
Reactivity	Human, Mouse, Rat
Host	Rabbit
Clonality	Polyclonal
Calculated MW	59087

## Additional Information

---

Gene ID	993
Other Names	M-phase inducer phosphatase 1; Dual specificity phosphatase Cdc25A
Target/Specificity	Recognizes endogenous levels of CDC25A (pS82) protein.
Dilution	WB~~WB (1/500 - 1/1000)
Format	Liquid in 0.42% Potassium phosphate, 0.87% Sodium chloride, pH 7.3, 30% glycerol, and 0.09% (W/V) sodium azide.
Storage	Store at -20 °C.Stable for 12 months from date of receipt

## Protein Information

---

Name	CDC25A
Function	Tyrosine protein phosphatase which functions as a dosage- dependent inducer of mitotic progression (PubMed: <a href="#">12676925</a> , PubMed: <a href="#">14559997</a> , PubMed: <a href="#">1836978</a> , PubMed: <a href="#">20360007</a> ). Directly dephosphorylates CDK1 and stimulates its kinase activity (PubMed: <a href="#">20360007</a> ). Also dephosphorylates CDK2 in complex with cyclin-E, in vitro (PubMed: <a href="#">20360007</a> ).

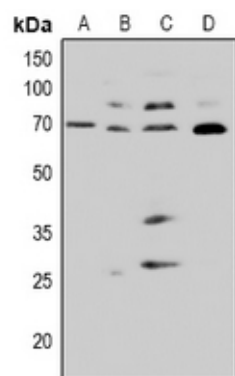
## Background

---

KLH-conjugated synthetic peptide encompassing a sequence within the N-term region of human CDC25A. The exact sequence is proprietary.

## Images

---



Western blot analysis of CDC25A (pS82) expression in HeLa (A), HCT116 (B), NIH3T3 (C), PC12 (D) whole cell lysates.

Please note: All products are 'FOR RESEARCH USE ONLY. NOT FOR USE IN DIAGNOSTIC OR THERAPEUTIC PROCEDURES'.