

Anti-ETS1 (pS251) Antibody

Rabbit polyclonal antibody to ETS1 (pS251)

Catalog # AP60937

Product Information

Application	WB, IHC
Primary Accession	P14921
Other Accession	P27577
Reactivity	Human, Mouse, Rat, Chicken
Host	Rabbit
Clonality	Polyclonal
Calculated MW	50408

Additional Information

Gene ID	2113
Other Names	EWSR2; Protein C-ets-1; p54
Target/Specificity	Recognizes endogenous levels of ETS1 (pS251) protein.
Dilution	WB~~WB (1/500 - 1/1000), IHC (1/50 - 1/100) IHC~~WB (1/500 - 1/1000), IHC (1/50 - 1/100)
Format	Liquid in 0.42% Potassium phosphate, 0.87% Sodium chloride, pH 7.3, 30% glycerol, and 0.09% (W/V) sodium azide.
Storage	Store at -20 °C.Stable for 12 months from date of receipt

Protein Information

Name	ETS1
Synonyms	EWSR2
Function	Transcription factor (PubMed: 10698492 , PubMed: 11909962). Directly controls the expression of cytokine and chemokine genes in a wide variety of different cellular contexts (PubMed: 20378371). May control the differentiation, survival and proliferation of lymphoid cells (PubMed: 20378371). May also regulate angiogenesis through regulation of expression of genes controlling endothelial cell migration and invasion (PubMed: 15247905 , PubMed: 15592518).
Cellular Location	Nucleus. Cytoplasm Note=Delocalizes from nucleus to cytoplasm when coexpressed with isoform Ets-1 p27. Highly expressed within lymphoid cells. Isoforms c- ETS-1A and Ets-1 p27 are

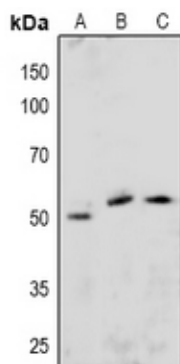
Tissue Location

both detected in all fetal tissues tested, but vary with tissue type in adult tissues. None is detected in brain or kidney.

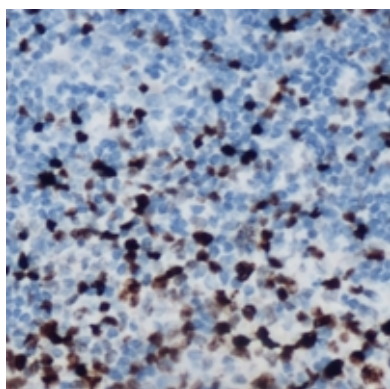
Background

KLH-conjugated synthetic peptide encompassing a sequence within the center region of human ETS1. The exact sequence is proprietary.

Images



Western blot analysis of ETS1 (pS251) expression in HeLa (A), NIH3T3 (B), H9C2 (C) whole cell lysates.



Immunohistochemical analysis of ETS1 (pS251) staining in human lymph node formalin fixed paraffin embedded tissue section. The section was pre-treated using heat mediated antigen retrieval with sodium citrate buffer (pH 6.0). The section was then incubated with the antibody at room temperature and detected using an HRP conjugated compact polymer system. DAB was used as the chromogen. The section was then counterstained with haematoxylin and mounted with DPX.

Please note: All products are 'FOR RESEARCH USE ONLY. NOT FOR USE IN DIAGNOSTIC OR THERAPEUTIC PROCEDURES'.