

# Anti-CDC42EP3 Antibody

Rabbit polyclonal antibody to CDC42EP3

Catalog # AP60943

## Product Information

---

<b>Application</b>	WB
<b>Primary Accession</b>	<a href="#">Q9UKI2</a>
<b>Other Accession</b>	<a href="#">Q9CQC5</a>
<b>Reactivity</b>	Human, Mouse, Rat, Monkey, Bovine
<b>Host</b>	Rabbit
<b>Clonality</b>	Polyclonal
<b>Calculated MW</b>	27678

## Additional Information

---

<b>Gene ID</b>	10602
<b>Other Names</b>	BORG2; CEP3; Cdc42 effector protein 3; Binder of Rho GTPases 2; MSE55-related Cdc42-binding protein
<b>Target/Specificity</b>	KLH-conjugated synthetic peptide encompassing a sequence within the N-term region of human CDC42EP3. The exact sequence is proprietary.
<b>Dilution</b>	WB~~WB (1/500 - 1/1000)
<b>Format</b>	Liquid in 0.42% Potassium phosphate, 0.87% Sodium chloride, pH 7.3, 30% glycerol, and 0.09% (W/V) sodium azide.
<b>Storage</b>	Store at -20 °C.Stable for 12 months from date of receipt

## Protein Information

---

<b>Name</b>	CDC42EP3
<b>Synonyms</b>	BORG2, CEP3
<b>Function</b>	Probably involved in the organization of the actin cytoskeleton. May act downstream of CDC42 to induce actin filament assembly leading to cell shape changes. Induces pseudopodia formation in fibroblasts.
<b>Cellular Location</b>	Endomembrane system; Peripheral membrane protein. Cytoplasm, cytoskeleton
<b>Tissue Location</b>	Highly expressed in the heart and weakly in the brain.

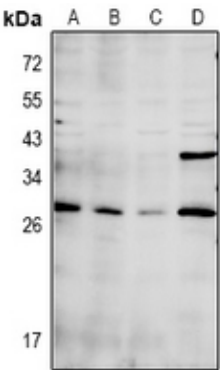
## Background

---

KLH-conjugated synthetic peptide encompassing a sequence within the N-term region of human CDC42EP3. The exact sequence is proprietary.

## Images

---



Western blot analysis of CDC42EP3 expression in C6 (A), CT26 (B), COS7 (C), MCF7 (D) whole cell lysates.

Please note: All products are 'FOR RESEARCH USE ONLY. NOT FOR USE IN DIAGNOSTIC OR THERAPEUTIC PROCEDURES'.