

Anti-CLIC6 Antibody

Rabbit polyclonal antibody to CLIC6

Catalog # AP60944

Product Information

Application	WB
Primary Accession	Q96NY7
Other Accession	Q8BHB9
Reactivity	Human, Mouse, Rat
Host	Rabbit
Clonality	Polyclonal
Calculated MW	73012

Additional Information

Gene ID	54102
Other Names	CLIC1L; Chloride intracellular channel protein 6; Parchorin
Target/Specificity	Recognizes endogenous levels of CLIC6 protein.
Dilution	WB~~WB (1/500 - 1/1000)
Format	Liquid in 0.42% Potassium phosphate, 0.87% Sodium chloride, pH 7.3, 30% glycerol, and 0.09% (W/V) sodium azide.
Storage	Store at -20 °C.Stable for 12 months from date of receipt

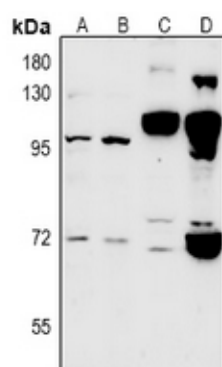
Protein Information

Name	CLIC6 {ECO:0000303 PubMed:37838179, ECO:0000312 HGNC:HGNC:2065}
Function	In the soluble state, catalyzes glutaredoxin-like thiol disulfide exchange reactions with reduced glutathione as electron donor (By similarity). Can insert into membranes and form voltage-dependent chloride-selective channels. The channel opens upon membrane depolarization at positive voltages and closes at negative membrane voltages (PubMed: 37838179). May play a critical role in water-secreting cells, possibly through the regulation of chloride ion transport (By similarity).
Cellular Location	Cytoplasm. Cell membrane; Single-pass membrane protein Note=Predominantly cytoplasmic. Upon chloride ion efflux from the cell, it is translocated to the plasma membrane (By similarity)
Tissue Location	Expressed in brain, placenta, pancreas, liver, lung, heart, kidney, liver, spleen, soleus muscle, and brown fat

Background

KLH-conjugated synthetic peptide encompassing a sequence within the center region of human CLIC6. The exact sequence is proprietary.

Images



Western blot analysis of CLIC6 expression in A549 (A), LO2 (B), AML12 (C), PC12 (D) whole cell lysates.

Please note: All products are 'FOR RESEARCH USE ONLY. NOT FOR USE IN DIAGNOSTIC OR THERAPEUTIC PROCEDURES'.