

Anti-EPHA10 Antibody

Rabbit polyclonal antibody to EPHA10

Catalog # AP60956

Product Information

Application	WB
Primary Accession	Q5JZY3
Other Accession	Q8BYG9
Reactivity	Human, Mouse
Host	Rabbit
Clonality	Polyclonal
Calculated MW	109716

Additional Information

Gene ID	284656
Other Names	Ephrin type-A receptor 10
Target/Specificity	Recognizes endogenous levels of EPHA10 protein.
Dilution	WB~~WB (1/500 - 1/1000)
Format	Liquid in 0.42% Potassium phosphate, 0.87% Sodium chloride, pH 7.3, 30% glycerol, and 0.09% (W/V) sodium azide.
Storage	Store at -20 °C.Stable for 12 months from date of receipt

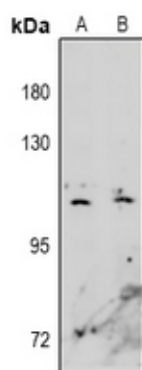
Protein Information

Name	EPHA10
Function	Receptor for members of the ephrin-A family. Binds to EFNA3, EFNA4 and EFNA5.
Cellular Location	[Isoform 1]: Cell membrane; Single- pass type I membrane protein [Isoform 2]: Secreted.
Tissue Location	Mainly expressed in testis.

Background

KLH-conjugated synthetic peptide encompassing a sequence within the center region of human EPHA10. The exact sequence is proprietary.

Images



Western blot analysis of EPHA10 expression in A549 (A), HeLa (B) whole cell lysates.

Please note: All products are 'FOR RESEARCH USE ONLY. NOT FOR USE IN DIAGNOSTIC OR THERAPEUTIC PROCEDURES'.