

# Anti-hnRNP CL1 Antibody

Rabbit polyclonal antibody to hnRNP CL1  
Catalog # AP60961

## Product Information

---

<b>Application</b>	WB
<b>Primary Accession</b>	<a href="#">O60812</a>
<b>Reactivity</b>	Human, Mouse
<b>Host</b>	Rabbit
<b>Clonality</b>	Polyclonal
<b>Calculated MW</b>	32142

## Additional Information

---

<b>Gene ID</b>	343069
<b>Other Names</b>	HNRPCL1; Heterogeneous nuclear ribonucleoprotein C-like 1; hnRNP C-like-1; hnRNP core protein C-like 1
<b>Target/Specificity</b>	Recognizes endogenous levels of hnRNP CL1 protein.
<b>Dilution</b>	WB~~WB (1/500 - 1/1000)
<b>Format</b>	Liquid in 0.42% Potassium phosphate, 0.87% Sodium chloride, pH 7.3, 30% glycerol, and 0.09% (W/V) sodium azide.
<b>Storage</b>	Store at -20 °C.Stable for 12 months from date of receipt

## Protein Information

---

<b>Name</b>	HNRNPCL1
<b>Synonyms</b>	HNRPCL1
<b>Function</b>	May play a role in nucleosome assembly by neutralizing basic proteins such as A and B core hnRNPs.
<b>Cellular Location</b>	Nucleus. Note=Component of ribonucleosomes.

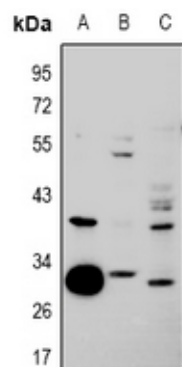
## Background

---

KLH-conjugated synthetic peptide encompassing a sequence within the center region of human hnRNP CL1. The exact sequence is proprietary.

## Images

---



Western blot analysis of hnRNP CL1 expression in A549 (A), HEK293T (B), MEF (C) whole cell lysates.

Please note: All products are 'FOR RESEARCH USE ONLY. NOT FOR USE IN DIAGNOSTIC OR THERAPEUTIC PROCEDURES'.