

Anti-SIX1 Antibody

Rabbit polyclonal antibody to SIX1

Catalog # AP60965

Product Information

Application	WB
Primary Accession	Q15475
Other Accession	Q62231
Reactivity	Human, Mouse, Rat, Monkey
Host	Rabbit
Clonality	Polyclonal
Calculated MW	32210

Additional Information

Gene ID	6495
Other Names	Homeobox protein SIX1; Sine oculis homeobox homolog 1
Target/Specificity	KLH-conjugated synthetic peptide encompassing a sequence within the center region of human SIX1. The exact sequence is proprietary.
Dilution	WB~~WB (1/500 - 1/1000)
Format	Liquid in 0.42% Potassium phosphate, 0.87% Sodium chloride, pH 7.3, 30% glycerol, and 0.09% (W/V) sodium azide.
Storage	Store at -20 °C.Stable for 12 months from date of receipt

Protein Information

Name	SIX1
Function	Transcription factor that is involved in the regulation of cell proliferation, apoptosis and embryonic development (By similarity). Plays an important role in the development of several organs, including kidney, muscle and inner ear (By similarity). Depending on context, functions as a transcriptional repressor or activator (By similarity). Lacks an activation domain, and requires interaction with EYA family members for transcription activation (PubMed: 15141091). Mediates nuclear translocation of EYA1 and EYA2 (PubMed: 19497856). Binds the 5'-TCA[AG][AG]TTNC-3' motif present in the MEF3 element in the MYOG promoter and CIDEA enhancer (PubMed: 15141091 , PubMed: 19497856 , PubMed: 23435380 , PubMed: 27923061). Regulates the expression of numerous genes, including MYC, CCND1 and EZR (By similarity). Acts as an activator of the IGFBP5 promoter, probably coactivated by EYA2 (By similarity). Repression of precursor cell proliferation in myoblasts is switched to activation through

recruitment of EYA3 to the SIX1-DACH1 complex (By similarity). During myogenesis, seems to act together with EYA2 and DACH2 (By similarity). Regulates the expression of CCNA1 (PubMed:[15123840](#)). Promotes brown adipocyte differentiation (By similarity).

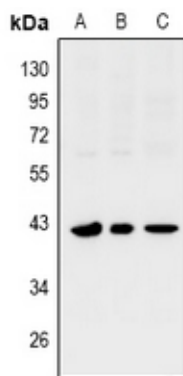
Cellular Location Nucleus. Cytoplasm

Tissue Location Specifically expressed in skeletal muscle.

Background

KLH-conjugated synthetic peptide encompassing a sequence within the center region of human SIX1. The exact sequence is proprietary.

Images



Western blot analysis of SIX1 expression in PC12 (A), MEF (B), COS7 (C) whole cell lysates.

Please note: All products are 'FOR RESEARCH USE ONLY. NOT FOR USE IN DIAGNOSTIC OR THERAPEUTIC PROCEDURES'.