

# Anti-USP50 Antibody

Rabbit polyclonal antibody to USP50

Catalog # AP60966

## Product Information

---

Application	WB, IHC
Primary Accession	<a href="#">Q70EL3</a>
Other Accession	<a href="#">Q6P8X6</a>
Reactivity	Human, Mouse, Rat
Host	Rabbit
Clonality	Polyclonal
Calculated MW	38955

## Additional Information

---

Gene ID	373509
Other Names	Inactive ubiquitin carboxyl-terminal hydrolase 50; Inactive ubiquitin-specific peptidase 50
Target/Specificity	Recognizes endogenous levels of USP50 protein.
Dilution	WB~~WB (1/500 - 1/1000), IHC (1/50 - 1/100) IHC~~WB (1/500 - 1/1000), IHC (1/50 - 1/100)
Format	Liquid in 0.42% Potassium phosphate, 0.87% Sodium chloride, pH 7.3, 30% glycerol, and 0.09% (W/V) sodium azide.
Storage	Store at -20 °C.Stable for 12 months from date of receipt

## Protein Information

---

Name	USP50 ( <a href="#">HGNC:20079</a> )
Function	Deubiquitinating enzyme that removes conjugated ubiquitin from specific proteins to regulate different cellular processes. Regulates the inflammasome signaling pathway by deubiquitinating 'Lys- 63'-linked polyubiquitination of the PYCARD/ASC adapter protein (PubMed: <a href="#">28094437</a> ). Regulates the ubiquitination and stability of the ACE2 protein (PubMed: <a href="#">36876523</a> ). Acts as a negative regulator of the G2/M checkpoint pathway, by preventing serine/threonine kinase WEE1 degradation, thereby repressing entry into mitosis following activation of the G2/M DNA damage checkpoint (PubMed: <a href="#">20930503</a> ).
Cellular Location	Cytoplasm. Cytoplasm, cytoskeleton, microtubule organizing center, centrosome. Nucleus Note=Accumulates in the nucleus following DNA injury

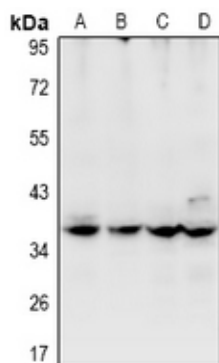
## Tissue Location

Weakly expressed in a few tissues.

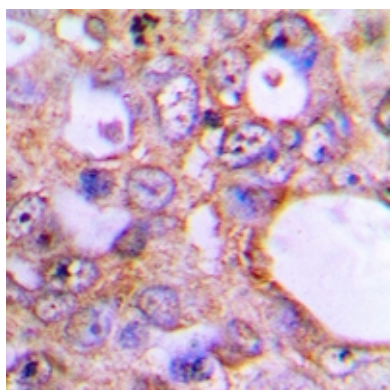
## Background

KLH-conjugated synthetic peptide encompassing a sequence within the C-term region of human USP50. The exact sequence is proprietary.

## Images



Western blot analysis of USP50 expression in MCF7 (A), HeLa (B), PC12 (C), CT26 (D) whole cell lysates.



Immunohistochemical analysis of USP50 staining in human lung cancer formalin fixed paraffin embedded tissue section. The section was pre-treated using heat mediated antigen retrieval with sodium citrate buffer (pH 6.0). The section was then incubated with the antibody at room temperature and detected using an HRP conjugated compact polymer system. DAB was used as the chromogen. The section was then counterstained with haematoxylin and mounted with DPX.

Please note: All products are 'FOR RESEARCH USE ONLY. NOT FOR USE IN DIAGNOSTIC OR THERAPEUTIC PROCEDURES'.