

# Anti-LRP10 Antibody

Rabbit polyclonal antibody to LRP10

Catalog # AP60968

## Product Information

---

<b>Application</b>	WB, IHC
<b>Primary Accession</b>	<a href="#">Q7Z4F1</a>
<b>Other Accession</b>	<a href="#">Q7TQH7</a>
<b>Reactivity</b>	Human, Mouse, Rat
<b>Host</b>	Rabbit
<b>Clonality</b>	Polyclonal
<b>Calculated MW</b>	76193

## Additional Information

---

<b>Gene ID</b>	26020
<b>Other Names</b>	Low-density lipoprotein receptor-related protein 10; LRP-10
<b>Target/Specificity</b>	KLH-conjugated synthetic peptide encompassing a sequence within the center region of human LRP10. The exact sequence is proprietary.
<b>Dilution</b>	WB~~WB (1/500 - 1/1000), IHC (1/50 - 1/100) IHC~~WB (1/500 - 1/1000), IHC (1/50 - 1/100)
<b>Format</b>	Liquid in 0.42% Potassium phosphate, 0.87% Sodium chloride, pH 7.3, 30% glycerol, and 0.09% (W/V) sodium azide.
<b>Storage</b>	Store at -20 °C.Stable for 12 months from date of receipt

## Protein Information

---

<b>Name</b>	LRP10
<b>Function</b>	Probable receptor, which is involved in the internalization of lipophilic molecules and/or signal transduction. May be involved in the uptake of lipoprotein APOE in liver (By similarity).
<b>Cellular Location</b>	Membrane; Single-pass type I membrane protein. Membrane, coated pit
<b>Tissue Location</b>	Expressed in blood leukocyte, lung, placenta, small intestine, liver, kidney, spleen, thymus, colon, skeletal muscle and heart.

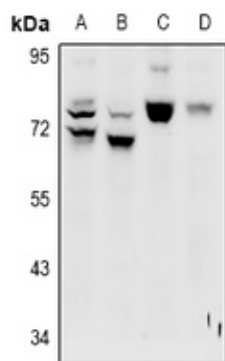
## Background

---

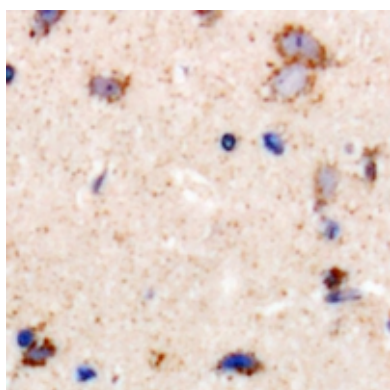
KLH-conjugated synthetic peptide encompassing a sequence within the center region of human LRP10. The exact sequence is proprietary.

## Images

---



Western blot analysis of LRP10 expression in HepG2 (A), A549 (B), PC12 (C), CT26 (D) whole cell lysates.



Immunohistochemical analysis of LRP10 staining in human brain formalin fixed paraffin embedded tissue section. The section was pre-treated using heat mediated antigen retrieval with sodium citrate buffer (pH 6.0). The section was then incubated with the antibody at room temperature and detected using an HRP conjugated compact polymer system. DAB was used as the chromogen. The section was then counterstained with haematoxylin and mounted with DPX.

Please note: All products are 'FOR RESEARCH USE ONLY. NOT FOR USE IN DIAGNOSTIC OR THERAPEUTIC PROCEDURES'.