

# Anti-NRBF2 Antibody

Rabbit polyclonal antibody to NRBF2

Catalog # AP60971

## Product Information

---

<b>Application</b>	WB
<b>Primary Accession</b>	<a href="#">Q96F24</a>
<b>Other Accession</b>	<a href="#">Q8VCQ3</a>
<b>Reactivity</b>	Human, Mouse, Rat
<b>Host</b>	Rabbit
<b>Clonality</b>	Polyclonal
<b>Calculated MW</b>	32378

## Additional Information

---

<b>Gene ID</b>	29982
<b>Other Names</b>	COPR; Nuclear receptor-binding factor 2; NRBF-2; Comodulator of PPAR and RXR
<b>Target/Specificity</b>	Recognizes endogenous levels of NRBF2 protein.
<b>Dilution</b>	WB~~WB (1/500 - 1/1000)
<b>Format</b>	Liquid in 0.42% Potassium phosphate, 0.87% Sodium chloride, pH 7.3, 30% glycerol, and 0.09% (W/V) sodium azide.
<b>Storage</b>	Store at -20 °C.Stable for 12 months from date of receipt

## Protein Information

---

<b>Name</b>	NRBF2
<b>Synonyms</b>	COPR
<b>Function</b>	May modulate transcriptional activation by target nuclear receptors. Can act as transcriptional activator (in vitro).
<b>Cellular Location</b>	Nucleus {ECO:0000250 UniProtKB:Q9QYK3}. Cytoplasm {ECO:0000250 UniProtKB:Q9QYK3}. Cytoplasmic vesicle. Cytoplasmic vesicle, autophagosome
<b>Tissue Location</b>	Detected in keratinocytes, liver and placenta (PubMed:15610520). Expressed in a subset of cells in pediatric medulloblastoma (PubMed:18619852).

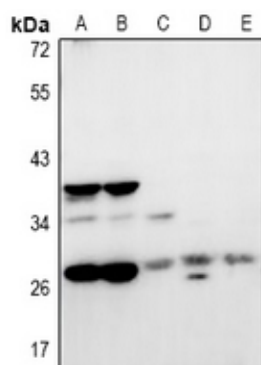
## Background

---

KLH-conjugated synthetic peptide encompassing a sequence within the center region of human NRBF2. The exact sequence is proprietary.

## Images

---



Western blot analysis of NRBF2 expression in HepG2 (A), LO2 (B), AML12 (C), PC12 (D), C6 (E) whole cell lysates.

Please note: All products are 'FOR RESEARCH USE ONLY. NOT FOR USE IN DIAGNOSTIC OR THERAPEUTIC PROCEDURES'.